

Borrachas Técnicas MGO Unipessoal Lda.



Rodas - Rodízios



Loja: Av. Sacadura Cabral n.º37 A 1000-272 Lisboa – Tel. 217940473 – Fax 217969890

www.borrachasmgo.com - borrachas@borrachasmgo.com

FURNITURE CASTORS

Twin Wheel

Castor

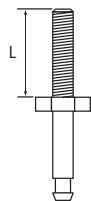
- **Black Nylon**
- Spark eroded finish
- Easy glide action
- Choice of mounting stems
- A choice of fittings below



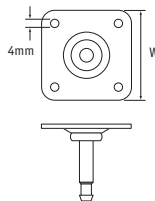
Part Number	Dimensions (mm)			Max Static Load Bearing (kg)	Std Pack Qty
	Wheel Dia.	Hooded	Braked		
500300	32	Yes	No	30	150
500301	40	No	No	50	150
500302	40	Yes	No	44	150
500303	40	Yes	Yes	44	150
500304	40	Yes	No	50	150
500305	40	Yes	Yes	50	150
500306	50	Yes	No	60	100
500307	50	Yes	Yes	60	100
500308	50	Yes	No	80	100
500309	50	Yes	Yes	80	100



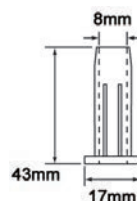
Type 1
Gripneck Stem



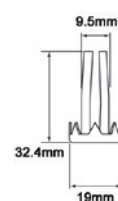
Type 2
Threaded Stem



Type 3
Plate Fixing



Type 4
Plastic Socket for
Gripneck Stem



Type 5
Metal Socket for
Gripneck Stem

Castor fittings

Part Number	Use with	Type	Dimensions (mm)	Std Pack Qty
500320	32mm, 40mm - hooded	1	38 (L)	150
500319	32mm, 40mm - hooded	2	M8x15 (L)	150
500321	32mm, 40mm - hooded	2	M8x25 (L)	150
500318	32mm, 40mm - hooded	3	35x35 (W)	150
500316	32mm, 40mm, 50mm - hooded	4	-	900
500324	40mm - unhooded	1	38 (L)	150
500322	40mm - unhooded	2	M8x15 (L)	150
500325	40mm - unhooded	2	M8x25 (L)	150
500323	40mm - unhooded	3	35x35 (W)	150
500312	50mm - hooded	1	38 (L)	100
500310	50mm - hooded	2	M8x15 (L)	100
500313	50mm - hooded	2	M8x25 (L)	100
500314	50mm - hooded	2	M10x15 (L)	100
500315	50mm - hooded	2	M10x25 (L)	100
500311	50mm - hooded	3	38x38 (L)	100
500317	50mm - hooded	5	-	300

The weight loadings quoted in this catalogue are for guide purposes only and assume that castors are used in a normal operating environment with floors in a smooth and reasonable condition.

Uneven or irregular floors will cause increased shock loadings. Castors of higher load-bearing capacity must be specified in these situations.

Castor loading capacity can be seriously impaired if castors are misused or poorly maintained, e.g. if used outside normal operating temperatures and/or if used in caustic environments.

FURNITURE CASTORS

Swivel Castor

Nylon

- Easy glide action
- Choice of Black or Natural Nylon
- All supplied with gripneck stem
- Braked style has auto-locked feature - the brake works when pressure is applied

Style 1 - Black Nylon

Part Number	Wheel Dia. (mm)	Hooded	Braked	Approx Load Capacity (kg)	Std Pack Qty
497153	50	Yes	No	60	100
497154	50	Yes	Yes	60	100
497151*	50	Yes	No	100	100

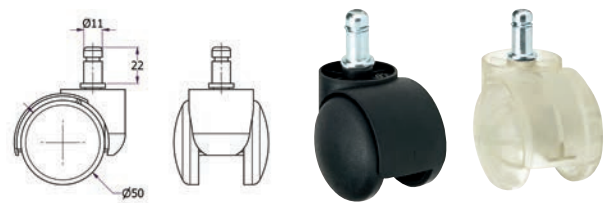
* Natural Nylon

Style 2 - Black Nylon

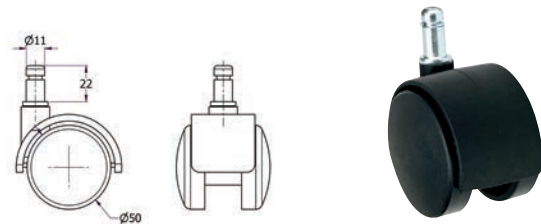
Part Number	Wheel Dia. (mm)	Hooded	Braked	Approx Load Capacity (kg)	Std Pack Qty
497403	50	Yes	No	60	100
497405	50	Yes	Yes	60	100
497160	60	No	No	60	100

Style 3 - Black Polyurethane

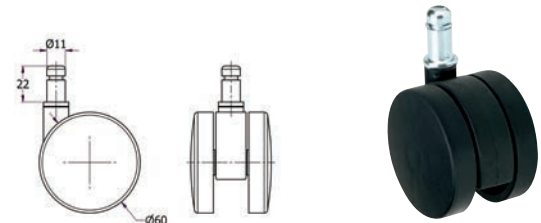
Part Number	Wheel Dia. (mm)	Hooded	Braked	Approx Load Capacity (kg)	Std Pack Qty
497404	50	Yes	No	60	100
497406	50	Yes	Yes	60	100
497402	60	No	No	60	100



Style 1



Style 2



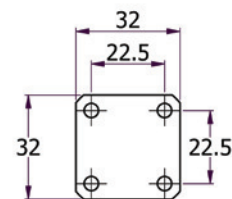
Style 3

Thermoplastic Castor

SR 5768

- Twin wheel castor with thermoplastic polymer wheel and swivel housing
- A choice of plate, threaded stem & knurled stem fitting.
- Threaded Stem has an M8 thread
- Knurled stem fitting is suitable for wood
- Technical drawings available online

Part Number	Wheel Dia. (mm)	Type	Std Pack Qty
499625	35	1	200
499626	45	1	100
499627	35	2	220
499628	45	2	100
499629	35	3	220
499630	45	3	100



The weight loadings quoted in this catalogue are for guide purposes only and assume that castors are used in a normal operating environment with floors in a smooth and reasonable condition. Uneven or irregular floors will cause increased shock loadings. Castors of higher load-bearing capacity must be specified in these situations.

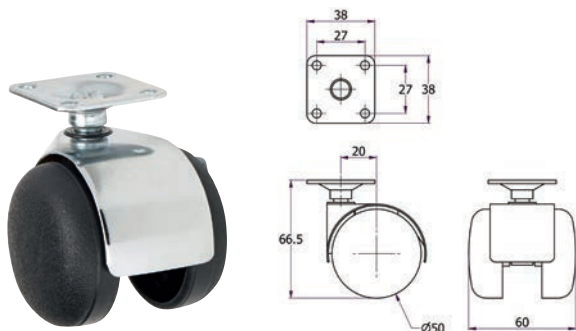
Castor loading capacity can be seriously impaired if castors are misused or poorly maintained, e.g. if used outside normal operating temperatures and/or if used in caustic environments.

FURNITURE CASTORS

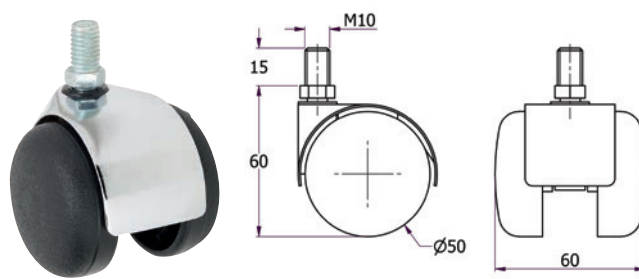
Metal Hooded Castor

Nylon wheel with gloss metallic hood

- Twin Wheel Nylon Castor
- A choice of Swivel plate, Threaded or Knurled fittings



Type 1

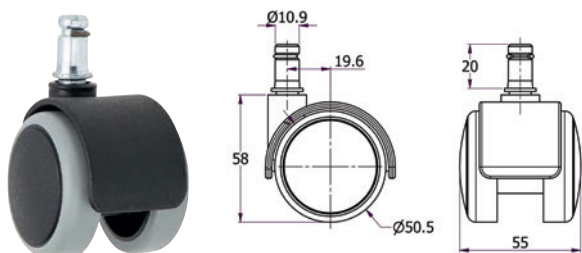


Type 2

Part Number	Wheel Dia.	Max Static Load Bearing (kg)	Type	Std Pack Qty
499631	50	35	1	64
499632	50	35	2	64

Grey Castor

- Grey thermoplastic wheel with grey finished steel housing
- Grip neck stem fitting
- Click in design suitable for quick installation



Part Number	Wheel Dia.	Approx Load Capacity (kg)	Std Pack Qty
116508620	50	35	60

The weight loadings quoted in this catalogue are for guide purposes only and assume that castors are used in a normal operating environment with floors in a smooth and reasonable condition.

Uneven or irregular floors will cause increased shock loadings. Castors of higher load-bearing capacity must be specified in these situations.

Castor loading capacity can be seriously impaired if castors are misused or poorly maintained, e.g. if used outside normal operating temperatures and/or if used in caustic environments.

FURNITURE CASTORS

Spherical Wheel Castor

- Swivel Pressed Steel with chrome plated housing
- Single ball race
- Available as a wheel, or with plate, threaded stem or knurled fitting
- Type 3 has M8 Threaded stem fitting
- Type 4 has 8mm Knurled stem fitting

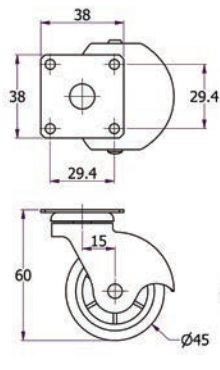
- Black Polypropylene

Part Number	Wheel Dia. (mm)	Approx Load Capacity (kg)	Type	Std Pack Qty
499601	35mm	12	1	360
499602	45mm	15	1	200
499603	35mm	12	2	144
499604	45mm	15	2	100
499605	35mm	12	3	152
499606	45mm	15	3	120
499607	35mm	12	4	140
499608	45mm	15	4	112

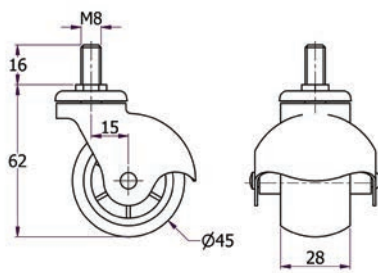


- Polypropylene Wheel with Rubber Tyre

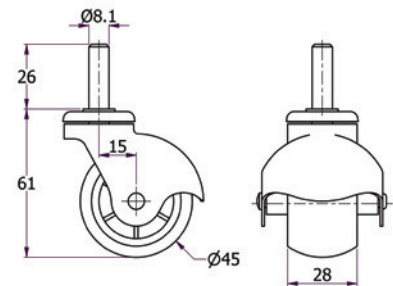
Part Number	Wheel Dia. (mm)	Approx Load Capacity (kg)	Type	Std Pack Qty
499609	45mm	15	1	160
499610	45mm	15	2	100
499611	45mm	15	3	120
499612	45mm	15	4	112



Type 2



Type 3



Type 4

The weight loadings quoted in this catalogue are for guide purposes only and assume that castors are used in a normal operating environment with floors in a smooth and reasonable condition. Uneven or irregular floors will cause increased shock loadings. Castors of higher load-bearing capacity must be specified in these situations.

Castor loading capacity can be seriously impaired if castors are misused or poorly maintained, e.g. if used outside normal operating temperatures and/or if used in caustic environments.

FURNITURE CASTORS

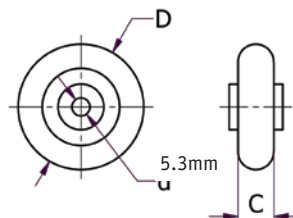
Thermoplastic Wheels



35mm dia Wheel

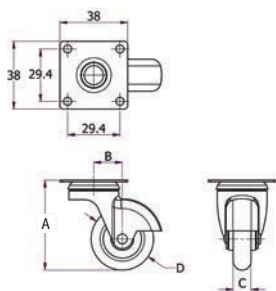


- 35mm dia. - One piece thermoplastic Wheel
- 40mm & 50mm dia. - One piece thermoplastic polymer wheel with bonded brass plated steel discs



Part Number	Dimensions (mm)		Approx Load Capacity (kg)	Std Pack Qty
	C	D		
499613	10	35	10	1000
499617	9.6	40	12	600
499618	11.8	50	15	360

Black Plastic Castor with Swivel Plate Fitting

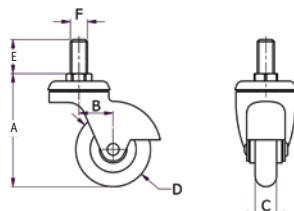


- Suitable for upholstery and furniture
- Swivel pressed steel, brass plated housing with a swivel plate fitting
- 35mm dia. - One piece thermoplastic Wheel
- 40mm & 50mm dia. - One piece thermoplastic polymer wheel with bonded brass plated steel discs

Part Number	Dimensions (mm)				Approx Load Capacity (kg)	Std Pack Qty
	A	B	C	D		
499614	51	16	16	35	10	180
499619	53.5	16	16	40	12	160
499620	66	18	17	50	15	136

Black Plastic Castor with Threaded Stem Fitting

SR 5767



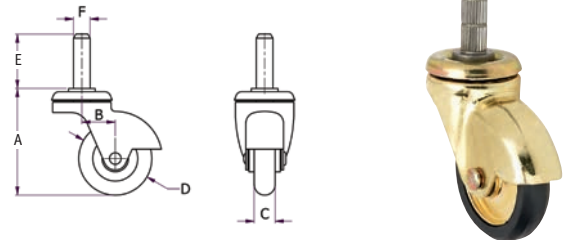
- Suitable for upholstery and furniture
- Swivel pressed steel, brass plated housing with a threaded stem fitting
- 35mm dia. - One piece thermoplastic Wheel
- 40mm & 50mm dia. - One piece thermoplastic polymer wheel with bonded brass plated steel discs

Part Number	Dimensions (mm)						Approx Load Capacity (kg)	Std Pack Qty
	A	B	C	D	E	F		
499615	53	16	16	35	16	M8	10	180
499621	55.5	16	16	40	16	M8	12	160
499622	68	18	17	50	16	M8	15	136

FURNITURE CASTORS

Black Plastic Castor with Knurled Stem Fitting

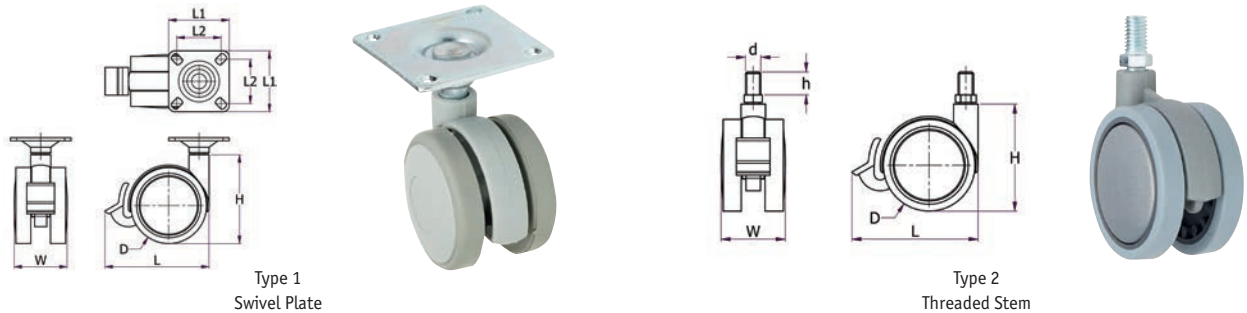
- Suitable for upholstery and furniture
- Swivel pressed steel, brass plated housing with a knurled stem fitting, suitable for wood
- 35mm dia. - One piece thermoplastic wheel
- 40mm & 50mm dia. - One piece thermoplastic polymer wheel with bonded brass plated steel discs



Part Number	Dimensions (mm)						Approx Load Capacity (kg)	Std Pack Qty
	A	B	C	D	E	F		
499616	51	16	16	35	26	8.1	10	184
499623	53.5	16	16	40	26	8.1	12	160
499624	66	18	17	50	26	8.1	15	134

Twin Wheel Castor with Thermoplastic Rubber Wheel

- Grey die-cast material housing
- Swivel plate of Threaded Stem fitting options
- Rubber wheel absorbs vibrations
- Wheel rubber hardness - Shore A 90



Part Number	Dimensions (mm)								Approx. Load Capacity (kg)	Type	Braked	Std Pack Qty
	D	d x h	L	L1	L2	W	H					
499634*	40	-	-	42	32	33	43	40	1	No	100	
499635	60	-	-	48	35	42	70	50	1	No	48	
499636	60	-	82	48	35	42	70	50	1	Yes	40	
499640	75	-	-	48	35	47	91	50	1	No	32	
499641	100	-	-	60	42	57	109	70	1	No	16	
499642	120	-	-	60	42	66	135	70	1	No	10	
499643	75	-	95	48	35	47	91	50	1	Yes	28	
499644	100	-	127	60	42	57	109	70	1	Yes	12	
499645	120	-	150	60	42	66	135	70	1	Yes	10	
499637*	40	M10 x 15	-	-	-	33	43	40	2	No	180	
499638	60	M10 x 15	-	-	-	42	70	50	2	No	60	
499639	60	M10 x 15	82	-	-	42	70	50	2	Yes	60	
499646	75	M10 x 15	-	-	-	47	91	50	2	No	21	
499647	100	M10 x 25	-	-	-	57	109	70	2	No	16	
499648	120	M10 x 25	-	-	-	66	135	70	2	No	10	
499649	75	M10 x 15	95	-	-	47	91	50	2	Yes	28	
499650	100	M10 x 25	127	-	-	66	135	70	2	Yes	12	
499651	120	M10 x 25	150	-	-	66	135	70	2	Yes	10	

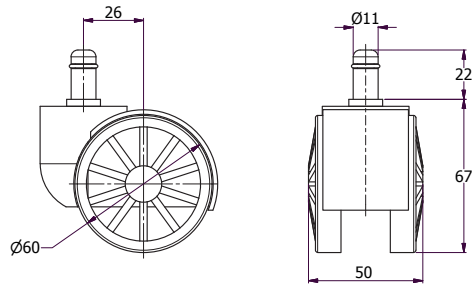
* 40mm wheel rubber hardness - Shore A 75

FURNITURE CASTORS

Spoke Wheel Castor

Nylon Castor

- Grip Neck Fitting
- 10 Spoke castor
- Black wheel and silver hood

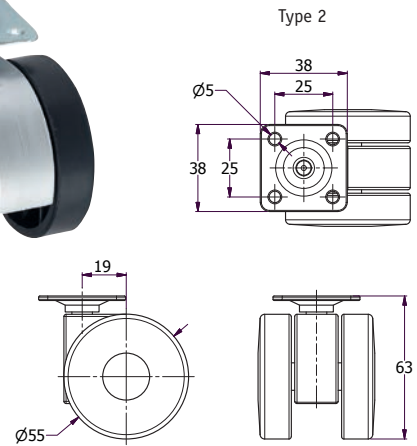
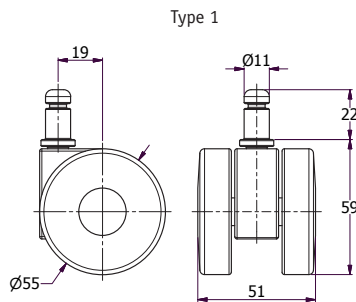


Part Number	Approx Load Capacity (kg)	Std Pack Qty
551067	55	200

Black / Silver Furniture Castor

Nylon Castor

- Black wheel castor with silver centre
- Gripneck or Swivel Plate fixing
- Ideal for furniture, such as office equipment, beds and sofas



Part Number	Type	Approx Load Capacity (kg)	Std Pack Qty
551069	1	55	200
551068	2	55	200

The weight loadings quoted in this catalogue are for guide purposes only and assume that castors are used in a normal operating environment with floors in a smooth and reasonable condition.

Uneven or irregular floors will cause increased shock loadings. Castors of higher load-bearing capacity must be specified in these situations.

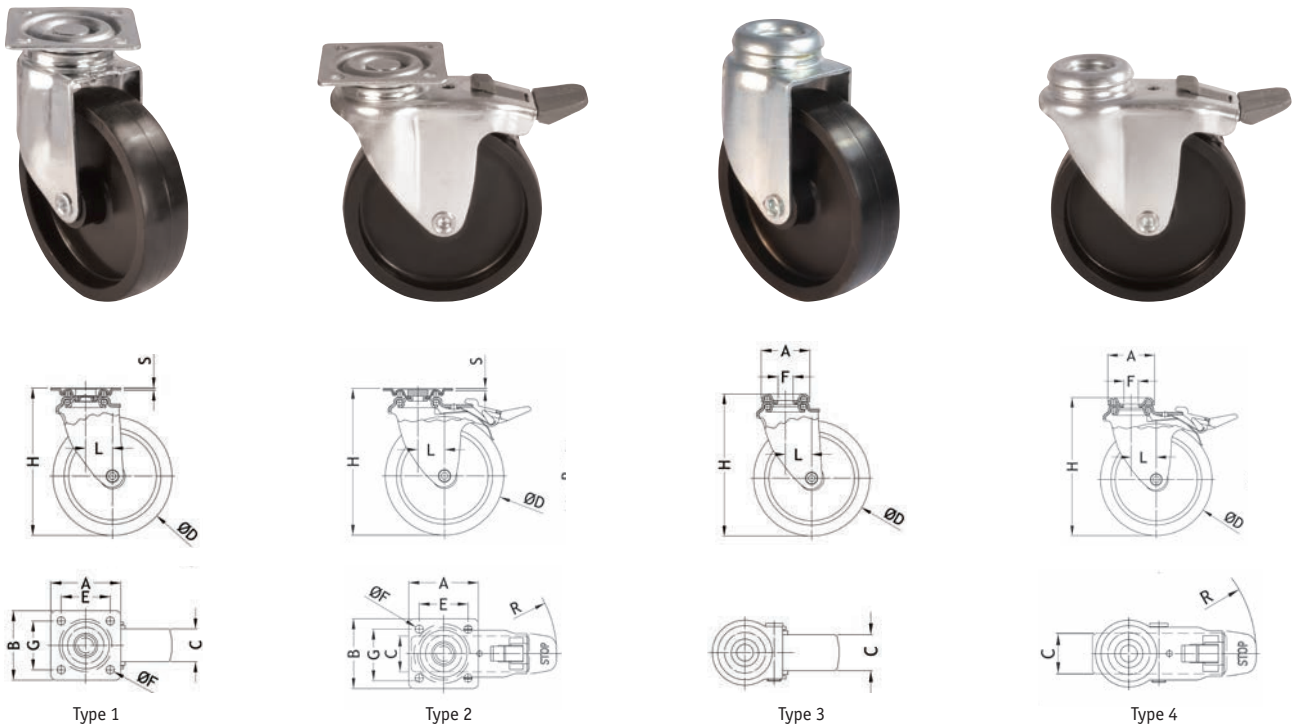
Castor loading capacity can be seriously impaired if castors are misused or poorly maintained, e.g. if used outside normal operating temperatures and/or if used in caustic environments.

INDUSTRIAL CASTORS - PLASTIC WHEELS

Castor - Black Plastic Wheel

Zinc Plated Steel Housing

- Suitable for light weight medical equipment, display cabinets and point-of-sale applications.
- Choice of fittings



SR 5646/SR 5647 - Swivel Plate

Part Number	Type	Dimensions (mm)							Approx. Load Capacity (kg)	Std Pack Qty
		D	C	A x B	E X G	F	H	L		
494721	1	40	17.5	47x47	33x33	5.5	62.0	18.5	25	110
494722	1	50	17.0	47x47	33x33	5.5	67.0	18.5	35	100
494723	1	60	21.5	47x47	33x33	5.5	79.0	18.5	40	80
494724	1	80	20.0	47x47	33x33	5.5	99.0	18.0	50	50
494725	2	50	17.0	47x47	33x33	5.5	67.5	27.0	35	80
494726	2	60	21.5	47x47	33x33	5.5	79.0	24.5	40	60
494727	2	80	20.0	47x47	33x33	5.5	99.0	23.0	50	40

SR 5648/SR 5649 - Bolt Hole

Part Number	Type	Dimensions (mm)							Approx. Load Capacity (kg)	Std Pack Qty
		D	C	A	F	H	L			
494728	3	40	17.5	33.5	10	62.5	18.5	25	125	
494729	3	50	17.0	33.5	10	67.5	18.5	35	110	
494730	3	60	21.5	33.5	10	79.0	18.5	40	80	
494731	3	80	20.0	33.5	10	97.0	18.0	50	50	
494732	4	50	17.0	33.5	10	67.5	27.0	35	90	
494733	4	60	21.5	33.5	10	79.0	24.5	40	60	
494734	4	80	20.0	33.5	10	99.0	23.0	50	40	

INDUSTRIAL CASTORS - TWINWHEEL

Black Plastic Twinwheel Castors

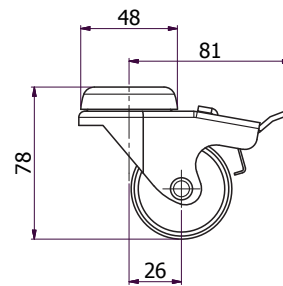
- Ideal for electronic cabinets or shopfitting applications
- For applications where a low level strong castor is required
- Swivel pressed steel housing with double ball race and swivel plate fitting
- Braked and unbraked available
- Zinc plated steel housing



Unbraked



Braked



- Bolt Hole Fitting

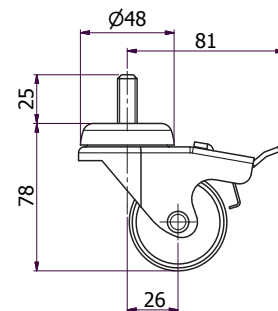
Part Number	Wheel Dia.	Approximate Load Capacity (kg)	Braked	Std Pack Qty
491131	50	70	No	40
491132	50	70	Yes	40



Unbraked



Braked



SR 5628 - Threaded Stem

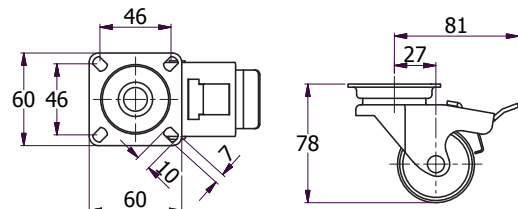
Part Number	Dimensions (mm)		Thread Size	Approximate Load Capacity (kg)	Braked	Std Pack Qty
	Wheel Dia.	Thread Length (mm)				
491133	50	25	M10	70	No	36
491134	50	25	M10	70	Yes	36



Unbraked



Braked



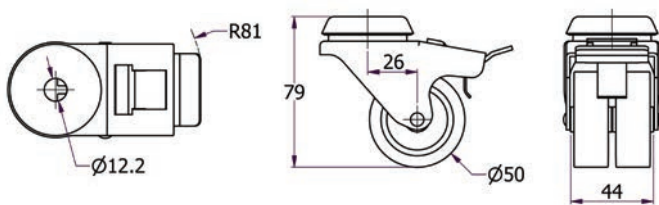
SR 5658 - Swivel Plate Fitting

Part Number	Wheel Dia.	Approximate Load Capacity (kg)	Braked	Std Pack Qty
494759	50	70	No	40
494760	50	70	Yes	36

INDUSTRIAL CASTORS - TWINWHEEL

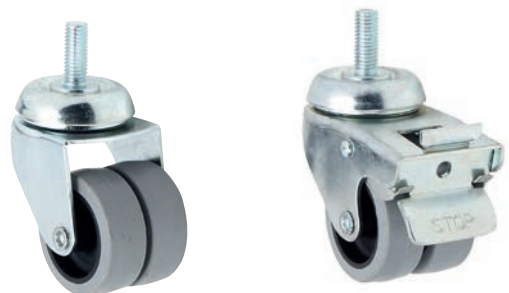
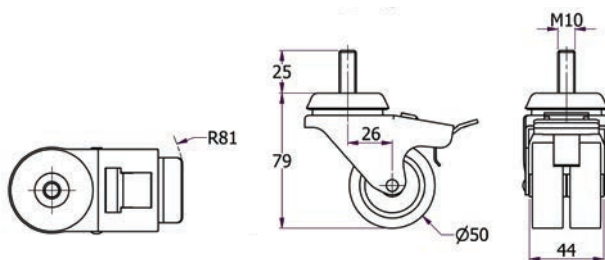
Grey Rubber Twinwheel Castors

- Grey synthetic rubber tyre
- For applications where low level strong castor is required
- Swivel pressed steel housing with double ball race and bolt hole fitting
- Braked and unbraked available
- Zinc plated steel housing



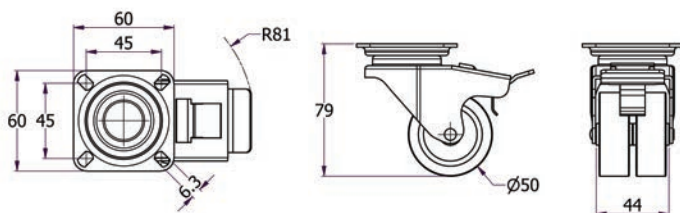
Bolt Hole Fitting

Part Number	Wheel Dia. (mm)	Approx Load Capacity (kg)	Braked	Std Pack Qty
499653	50	70	No	48
499654	50	70	Yes	40



Threaded Stem

Part Number	Dimensions (mm)		Thread Size	Approx Load Capacity (kg)	Braked	Std Pack Qty
	Wheel Dia.	Thread Length				
499655	50	25	M10	70	No	44
499656	50	25	M10	70	Yes	32



Swivel Plate Fitting

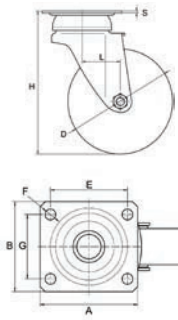
Part Number	Wheel Dia. (mm)	Approx Load Capacity (kg)	Braked	Std Pack Qty
499657	50	70	No	40
499658	50	70	Yes	32

INDUSTRIAL CASTORS - NYLON WHEELS

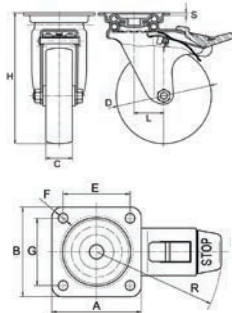
Castor - White Nylon Wheel

Zinc Plated Steel Housing

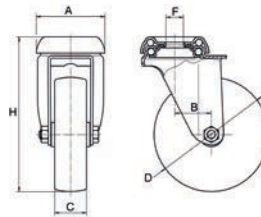
- A full range of light to heavy duty castors suitable for use in a variety of applications
- Light duty - suitable for display units, restaurant equipment, trolleys, office & medical equipment
- Medium duty - Suitable for trolleys, roll cages and material handling applications
- Heavy duty - trolleys, lifting equipment and automatic gates
- Good resistance to abrasion, petroleum and chemical agents
- Double ball race on Types 1 to 6
- Total stop brake locks wheel and swivel on braked versions



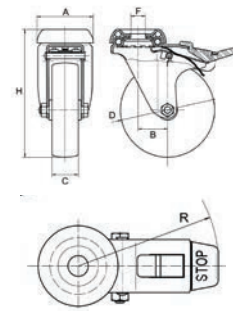
Type 1



Type 2



Type 3



Type 4

Swivel Plate SR5630 / SR5659 / SR5623 / SR5604 / SR5660 / SR5624

Part Number	Type	Dimensions (mm)							Approx. Load Capacity (kg)	Std Pack Qty
		D	C	A x B	E X G	F	H	R		
491012	1	50	18	60 x 60	45 x 45	6.5	70	-	55	48
491013	1	60	22	60 x 60	45 x 45	6.5	90	-	60	36
491014	1	75	23	60 x 60	45 x 45	6.5	106	-	60	28
491015	1	80	22	60 x 60	45 x 45	6.5	109	-	60	28
491016	1	100	27	76 x 70	60 x 50	8.3	134	-	80	16
491017	1	125	27	76 x 70	60 x 50	8.3	159	-	80	14
494761	1	80	30	95 x 80	80 x 60	9.0	108	-	100	16
494762	1	100	30	95 x 80	80 x 60	9.0	127	-	120	14
494763	1	125	39	95 x 80	80 x 60	9.0	155	-	150	8
499818	1	150	40	98.7 x 80	80 x 60	9.0	184	-	180	6
491121	1	150	42	132 x 110	105 x 80	12.0	188	-	330	4
491122	1	200	50	132 x 110	105 x 80	12.0	243	-	600	2
491018	2	50	18	60 x 60	45 x 45	6.5	70	80	55	48
491019	2	60	22	60 x 60	45 x 45	6.5	90	84	60	36
491020	2	75	23	60 x 60	45 x 45	6.5	106	84	60	28
491021	2	80	22	60 x 60	45 x 45	6.5	109	84	60	28
491022	2	100	27	76 x 70	60 x 50	8.3	134	106	80	16
491023	2	125	27	76 x 70	60 x 50	8.3	159	106	80	14
494765	2	80	30	95 x 80	80 x 60	9.0	108	110	100	20
494766	2	100	30	95 x 80	80 x 60	9.0	127	110	120	16
494767	2	125	39	95 x 80	80 x 60	9.0	155	113	150	10
499819	2	150	40	98.7 x 80	80 x 60	9.0	184	115	180	6
491123	2	150	42	132 x 110	105 x 80	12.0	188	128	330	4
491124	2	200	50	132 x 110	105 x 80	12.0	243	158	600	2

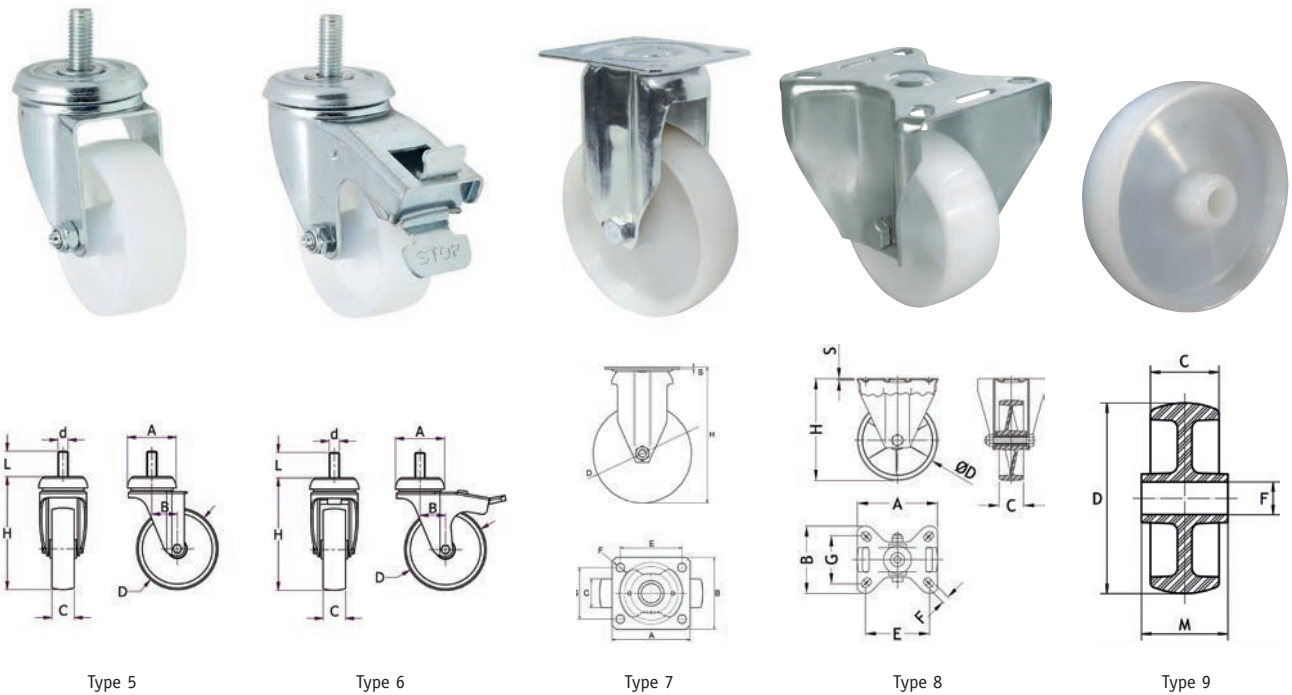
Bolt Hole SR5600 / SR5662

Part Number	Type	Dimensions (mm)							Approx. Load Capacity (kg)	Std Pack Qty
		D	C	A	F	H	R			
490995	3	50	18	48	12	70	-	55	48	
490996	3	60	22	48	12	90	-	60	40	
490997	3	75	23	48	12	106	-	60	36	
490998	3	80	22	48	12	109	-	60	36	
490999	3	100	27	57	12	134	-	80	16	
491000	3	125	27	57	12	159	-	80	12	
494773	3	80	30	64	12	108	-	100	20	
494774	3	100	30	64	12	127	-	120	16	
494775	3	125	39	64	12	155	-	120	12	
491001	4	50	18	48	12	70	80	55	48	
491002	4	60	22	48	12	90	84	60	40	
491003	4	75	23	48	12	106	84	60	36	
491004	4	80	23	48	12	109	84	60	36	
491005	4	100	27	57	12	134	106	80	16	
491006	4	125	27	57	12	159	106	80	12	
494776	4	80	30	64	12	108	110	100	16	
494777	4	100	30	64	12	127	110	120	14	
494778	4	125	39	64	12	155	113	120	12	

CONTINUED ON NEXT PAGE

INDUSTRIAL CASTORS - NYLON WHEELS

Castor - White Nylon Wheel *CONTINUED*



Threaded Stem SR5777 / SR5778 / SR5783 / SR5784

Part Number	Type	Thread Size	Dimensions (mm)			Approx. Load Capacity (kg)	Std Pack Qty
			D	C	H		
497935	5	M10 x 25	50	24	70	55	52
497936	5	M10 x 25	60	28	90	60	36
497937	5	M10 x 25	75	28	106	60	32
497938	5	M10 x 25	80	28	109	60	32
497939	5	M12 x 30	100	33	132	80	16
497940	5	M12 x 30	125	33	157	80	12
497967	5	M12 x 28	80	40	108	100	20
497968	5	M12 x 28	100	40	127	120	16
497969	5	M12 x 28	125	44	155	120	12
497941	6	M10 x 25	50	24	70	55	52
497942	6	M10 x 25	60	28	90	60	36
497943	6	M10 x 25	75	28	106	60	32
497944	6	M10 x 25	80	28	109	60	32
497945	6	M12 x 30	100	33	132	80	16
497946	6	M12 x 30	125	33	157	80	12
497970	6	M12 x 28	80	40	108	100	16
497971	6	M12 x 28	100	40	127	120	14
497972	6	M12 x 28	125	44	155	120	12

Fixed Plate SR5602 / SR5661 / SR5774

Part Number	Type	Dimensions (mm)						Approx. Load Capacity (kg)	Std Pack Qty
		D	C	A x B	E X G	F	H		
491007	7	50	18	60x60	45x45	6.5	70	55	48
491008	7	60	22	60x60	45x45	6.5	90	60	40
491009	7	75	23	60x60	45x45	6.5	106	60	36
491010	7	80	22	60x60	45x45	6.5	109	60	36
491011	7	100	27	76x70	60x50	8.3	134	80	14
494769	8	80	30	100x84	80x60	9	108	100	16
494770	8	100	30	100x84	80x60	9	127	12	12
494771	8	125	39	100x84	80x60	9	155	150	10
499820	8	150	40	100x84	80x60	9	184	180	6
499662	8	150	48	135x111	105x80	11	188	330	4
499663	8	200	60	135x114	105x80	12.3	240	600	2

Wheel Only SR5629

Part Number	Type	Dimensions (mm)				Approx. Load Capacity (kg)	Std Pack Qty
		D	C	F	M		
491138	9	50	17	8	21.5	55	48
491139	9	60	22	10	27.0	60	48
491140	9	75	23	8	27.0	80	48
491141	9	80	22	10	27.0	80	48
491142	9	100	27	12	32.0	90	44

Compatible with SR5600 - SR5614 castors

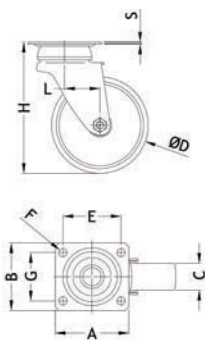
N.B. Styles may vary

INDUSTRIAL CASTORS - NYLON WHEELS

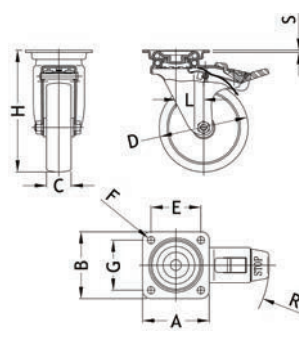
Castor - White Nylon Wheel

Stainless Steel Housing

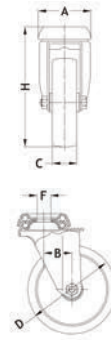
- Ideal for catering and medical industries
- Good resistance to corrosion and rust, water and chemicals
- Choice of fittings



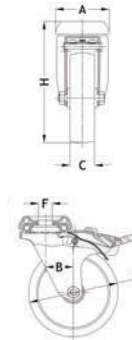
Type 1



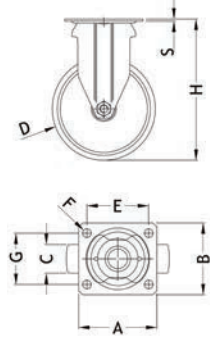
Type 2



Type 3



Type 4



Type 5

SR 5632/SR 5633 - Swivel Plate

Part Number	Type	Dimensions (mm)							Approx. Load Capacity (kg)	Std Pack Qty
		D	C	A x B	EX G	F	H	R		
494473	1	60	22	60 x 60	45 x 45	6.5	90	-	60	40
494474	1	80	22	60 x 60	45 x 45	6.5	109	-	60	36
494475	1	100	27	76 x 70	60 x 50	8.3	134	-	80	16
494476	1	125	27	76 x 70	60 x 50	8.3	159	-	80	12
494477	2	60	22	60 x 60	45 x 45	6.5	90	84	60	40
494478	2	80	22	60 x 60	45 x 45	6.5	109	84	60	36
494479	2	100	27	76 x 70	60 x 50	8.3	134	106	80	16
494480	2	125	27	76 x 70	60 x 50	8.3	159	106	80	12

SR 5664 - Fixed Plate

Part Number	Type	Dimensions (mm)							Approx. Load Capacity (kg)	Std Pack Qty
		D	C	A x B	EX G	F	H	R		
494814	5	60	22	60 x 60	45 x 45	6.5	90	-	60	40
494815	5	80	22	60 x 60	45 x 45	6.5	109	-	60	36
494816	5	100	27	76 x 70	60 x 50	8.3	134	-	80	12
494817	5	125	27	76 x 70	60 x 50	8.3	159	-	80	10

SR 5630/SR 5631 - Bolt Hole

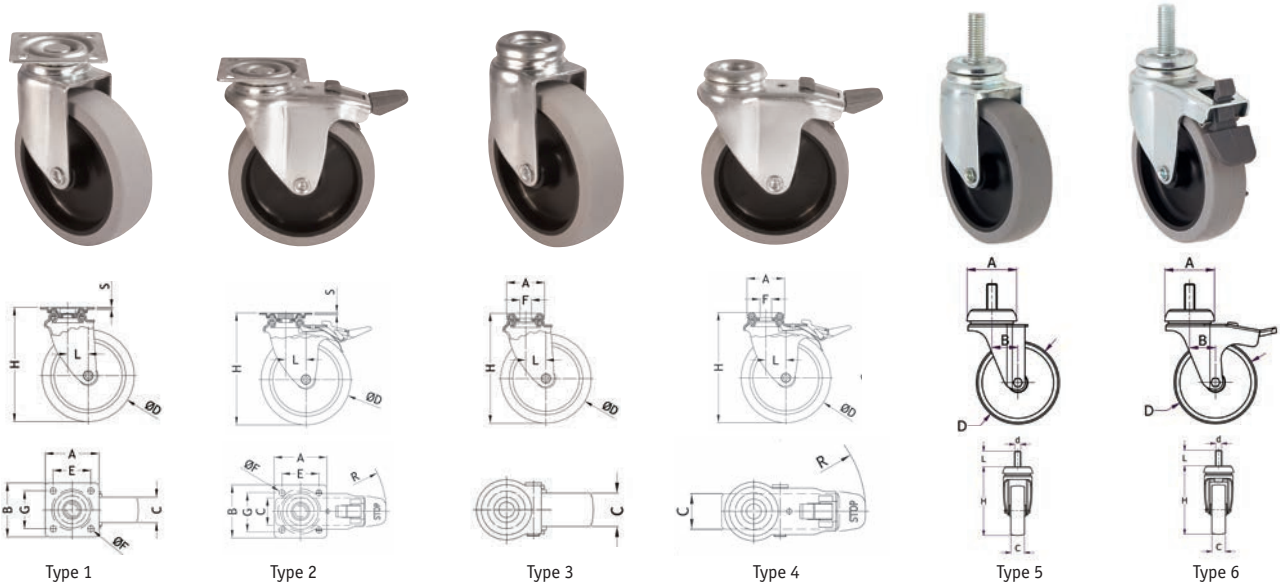
Part Number	Type	Dimensions (mm)							Approx. Load Capacity (kg)	Std Pack Qty
		D	C	A x B	EX G	F	H	R		
494463	3	60	22	48	12	90	-	60	40	
494464	3	80	22	48	12	109	-	60	36	
494465	3	100	27	57	12	132	-	80	16	
494466	3	125	27	57	12	156	-	80	12	
494467	4	60	22	48	12	90	84	60	40	
494468	4	80	22	48	12	109	84	60	36	
494469	4	100	27	57	12	132	106	80	16	
494470	4	125	27	57	12	156	106	80	12	

INDUSTRIAL CASTORS - RUBBER TYRES

Castor - Grey Synthetic Rubber Tyre

Zinc Plated Steel Housing, Plastic Wheel Centre

- Suitable for light weight medical equipment, display cabinets and point-of-sale applications.
- Plastic rubber tyre not resistant to contact with greases, oils or chlorides
- Choice of fittings



SR5650/SR5651 - Swivel Plate

Part Number	Type	Dimensions (mm)								Approx. Load Capacity (kg)	Std Pack Qty
		D	C	A x B	E X G	F	H	L	R		
494735	1	40	18.5	47x47	33x33	5.5	62	18.5	-	25	100
494736	1	50	18.5	47x47	33x33	5.5	67	18.5	-	35	95
494737	1	63	21.5	47x47	33x33	5.5	80	18.5	-	40	70
494738	1	80	22.0	47x47	33x33	5.5	99	18.0	-	50	40
494739	2	50	18.5	47x47	33x33	5.5	67.5	27.0	77	35	80
494740	2	63	21.5	47x47	33x33	5.5	80.5	24.5	77	40	60
494741	2	80	22.0	47x47	33x33	5.5	99.0	23.0	77	50	40

SR5775/SR5776 - Threaded Stem

Part Number	Type	Thread Size	Dimensions (mm)				Approx. Load Capacity (kg)	Std Pack Qty
			D	C	H	B		
497921	5	M10x25	40	24	62.5	18.5	25	96
497922	5	M10x25	50	24	67.5	18.5	35	92
497923	5	M10x25	63	28	80.5	18.5	40	68
497924	5	M10x25	80	28	98.0	18.0	50	40
497926	6	M10x25	50	24	67.5	27.0	35	72
497927	6	M10x25	63	28	80.5	24.5	40	48
497928	6	M10x25	80	28	98.0	23.0	50	

SR5652/SR5653 - Bolt Hole

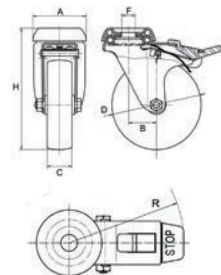
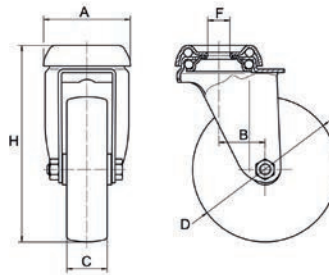
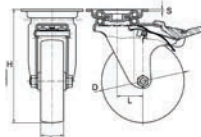
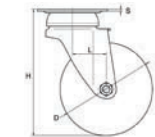
Part Number	Type	Dimensions (mm)								Approx. Load Capacity (kg)	Std Pack Qty
		D	C	A	F	H	L	R			
494742	3	40	18.5	33.5	10	62.5	18.5	-	25	120	
494743	3	50	18.5	33.5	10	67.5	18.5	-	35	100	
494744	3	63	21.5	33.5	10	80.5	18.5	-	40	75	
494745	3	80	22.0	33.5	10	99	18.0	-	50	40	
494746	4	50	18.5	33.5	10	67.5	27.0	77	35	80	
494747	4	63	21.5	33.5	10	80.5	24.5	77	40	60	
494748	4	80	22.0	33.5	10	99.0	23.0	77	50	40	

INDUSTRIAL CASTORS - RUBBER TYRES

Castor - Grey Natural Rubber Tyre

Zinc Plated Steel Housing, Plastic Wheel Centre

- Suitable for medical equipment, display cabinets, point-of-sale, educational furniture, computer & office furniture
- Natural grey rubber tyre not resistant to contact with greases, oils or chloride
- Double ball race on Types 1 to 4
- Threadguards as standard
- Total stop brake locks wheel and swivel on braked versions
- Choice of fittings



Type 1

Type 2

Type 3

Type 4

SR5608/SR5609 - Swivel Plate

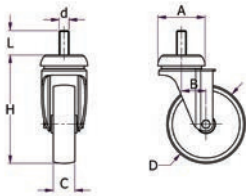
Part Number	Type	Dimensions (mm)							Approx. Load Capacity (kg)	Std Pack Qty
		D	C	A x B	E X G	F	H	R		
491035	1	60	20	60 x 60	45 x 45	6.5	90	-	60	36
491036	1	80	22	60 x 60	45 x 45	6.5	109	-	60	32
491037	1	100	28	76 x 70	60 x 50	8.3	134	-	80	16
491038	1	125	28	76 x 70	60 x 50	8.3	159	-	80	14
491039	2	60	20	60 x 60	45 x 45	12	90	84	60	36
491040	2	80	22	60 x 60	45 x 45	12	109	84	60	32
491041	2	100	28	76 x 70	60 x 50	12	134	106	80	16
491042	2	125	28	76 x 70	60 x 50	12	159	106	80	14

SR5605/SR5606 - Bolt Hole

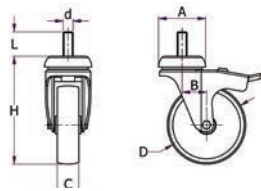
Part Number	Type	Dimensions (mm)							Approx. Load Capacity (kg)	Std Pack Qty
		D	C	A	B	F	H	R		
491024	3	60	20	48	26	12	90	-	60	40
491025	3	80	22	48	25	12	109	-	60	32
491026	3	100	28	57	36	12	134	-	80	16
491027	3	125	28	57	35	12	159	-	80	14
491028	4	60	20	48	28	12	90	84	60	40
491029	4	80	22	48	25	12	109	84	60	32
491030	4	100	28	57	35	12	134	106	80	16
491031	4	125	28	57	33	12	159	106	80	12

INDUSTRIAL CASTORS - RUBBER TYRES

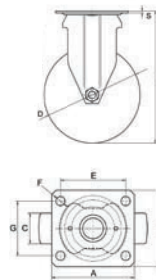
Castor - Grey Natural Rubber Tyre *CONTINUED*



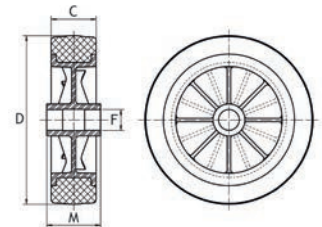
Type 5



Type 6



Type 7



Type 8

SR5779/SR5780 - Threaded Stem

Part Number	Type	Thread Size	Dimensions (mm)				Approx. Load Capacity (kg)	Std Pack Qty
			D	C	H	B		
497947	5	10 x 25	60	20	90	26	60	36
497948	5	10 x 25	80	22	109	25	60	32
497949	5	12 x 30	100	28	132	36	80	16
497950	5	12 x 30	125	28	157	35	80	12
497951	6	10 x 25	60	20	90	26	60	36
497952	6	10 x 25	80	22	109	25	60	32
497953	6	12 x 30	100	28	132	36	80	16
497954	6	12 x 30	125	28	157	35	80	12

SR5607 - Fixed Plate

Part Number	Type	Dimensions (mm)						Approx. Load Capacity (kg)	Std Pack Qty
		D	C	A x B	E X G	F	H		
491032	7	60	20	60 x 60	45 x 45	6.5	90	60	40
491033	7	60	22	60 x 60	45 x 45	6.5	109	60	32
491034	7	76	28	76 x 70	60 x 50	8.3	134	80	16

SR5629 - Wheel Only

Part Number	Type	Dimensions (mm)				Approx. Load Capacity (kg)	Std Pack Qty
		D	C	F	M		
491143	8	60	20	10	27	60	48
491144	8	80	22	10	27	60	48
491145	8	100	28	12	32	80	48

Compatible with SR5600 - SR5614 castors

INDUSTRIAL CASTORS - RUBBER TYRES

Castor - Grey Rubber Tyre

Fitting

Zinc Plated Housing, Plastic Wheel Centre

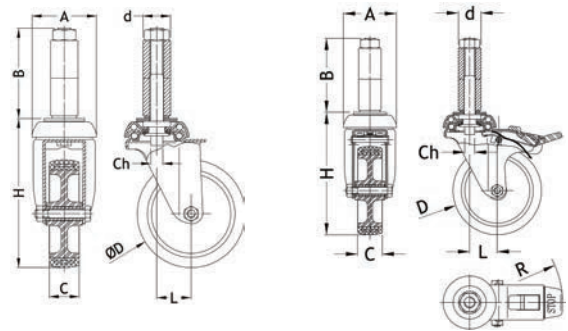
- Expander fitting allows castors to be fitted into a hollow tube
- Swivel plate
- Provides secure fitting to all popular sizes of round and square tubing
- Supplied fully assembled



Type 1



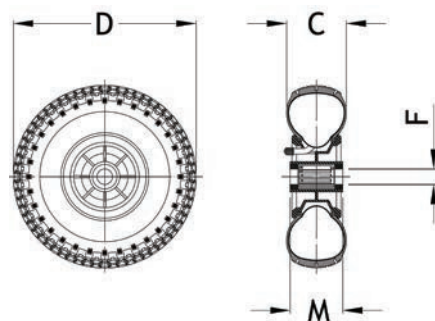
Type 2



Part Number	Type	Dimensions (mm)								Shape	CH	To Fit Tube Size (mm)	Approximate Load Capacity (kg)	Std Pack Qty
		D	A	B	C	H	L	R						
494451	1	80	48	67	22	111	25	-	Round	9	19 - 22	60	30	
494452	1	80	48	67	22	111	25	-	Round	9	21 - 23	60	30	
494453	1	80	48	67	22	111	25	-	Square	9	17x17 - 19x19	60	30	
494454	1	80	48	67	22	111	25	-	Square	9	22x22 - 24x24	60	30	
494455	1	100	57	67	27	136	36	-	Round	9	19 - 21	80	16	
494456	1	100	57	67	27	136	36	-	Round	9	21 - 23	80	16	
494457	1	100	57	67	27	136	36	-	Square	9	17x17 - 19x19	80	16	
494458	1	100	57	67	27	136	36	-	Square	9	22x22 - 24x24	80	16	
494491	2	80	48	67	22	111	25	84	Round	9	19 - 22	60	28	
494492	2	80	48	67	22	111	25	84	Round	9	21 - 23	60	28	
494493	2	80	48	67	22	111	25	84	Square	9	17x17 - 19x19	60	28	
494494	2	80	48	67	22	111	25	84	Square	9	22x22 - 24x24	60	28	
494495	2	100	57	67	27	136	36	106	Round	9	19 - 21	80	14	
494496	2	100	57	67	27	136	36	106	Round	9	21 - 23	80	14	
494497	2	100	57	67	27	136	36	106	Square	9	17x17 - 19x19	80	14	
494498	2	100	57	67	27	136	36	106	Square	9	22x22 - 24x24	80	14	

Wheel - Black Rubber Tyre

Plastic Centre - Plain or Roller Bearing



MOSS

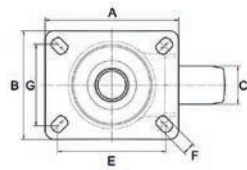
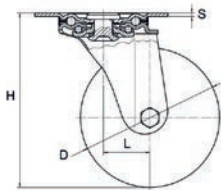
Part Number	Dimensions (mm)				Pressure Max. Bar	Style	Std Pack Qty
	C	D	F	M			
494781	85	260	20	75	2.0	Plain Bearing	2
494782	50	200	20	59	1.8	Roller Bearing	6
494783	85	260	20	75	2.0	Roller Bearing	2

INDUSTRIAL CASTORS - RUBBER TYRES

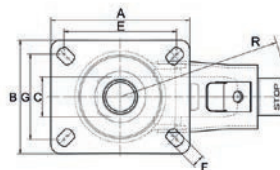
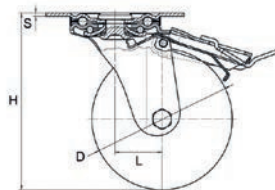
Castor - Blue Natural Rubber Tyre

Zinc Plated Steel Housing, Plastic Wheel Centre

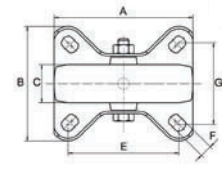
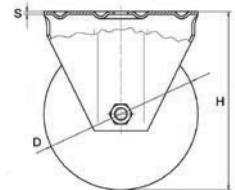
- Suitable for transport cases, catering equipment, flight cases, trolleys
- Non marking blue rubber tyre not resistant to contact with greases, oils & chloride
- Total stop brake locks wheel and swivel on braked versions
- Double ball race on Types 1 and 2
- Choice of fittings



Type 1



Type 2



Type 3

SR5621/SR5622 - Swivel Plate

Part Number	Type	Dimensions (mm)							Approx. Load Capacity (kg)	Std Pack Qty
		D	C	A x B	E x G	F	H	R		
491115	1	80	36	99 x 80	80 x 60	9	108	-	150	12
491116	1	100	36	99 x 80	80 x 60	9	127	-	150	12
491117	1	125	36	99 x 80	80 x 60	9	160	-	160	8
491118	2	80	36	99 x 80	80 x 60	9	108	116	150	12
491119	2	100	36	99 x 80	80 x 60	9	127	116	150	12
491120	2	125	36	99 x 80	80 x 60	9	160	130	200	8

SR5773 - Fixed Plate

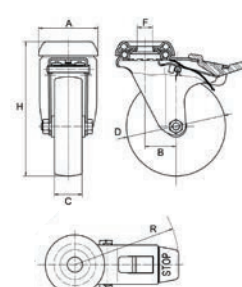
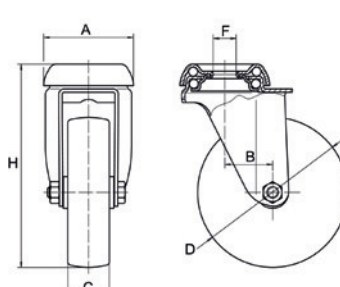
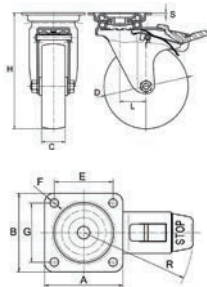
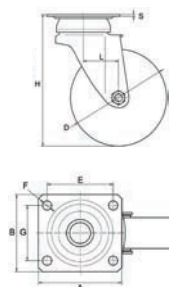
Part Number	Type	Dimensions (mm)						Approx. Load Capacity (kg)	Std Pack Qty
		D	C	A x B	E x G	F	H		
499659	3	80	40	100 x 84	80 x 60	9	108	150	16
499660	3	100	40	100 x 84	80 x 60	9	127	150	12
499661	3	125	44	100 x 84	80 x 60	9	155	200	8

INDUSTRIAL CASTORS - RUBBER TYRES

Castor - Black Synthetic Rubber Tyre

Zinc Plated Steel Housing, Plastic Wheel Centre

- Suitable for medical equipment, display cabinets, point-of-sale, educational furniture, computer & office furniture
- Thermoplastic rubber tyre not resistant to contact with greases, oils or chloride
- Double ball race on Types 1 to 6
- Total stop brake locks wheel and swivel on braked versions
- Choice of fittings



Type 1

Type 2

Type 3

Type 4

SR5613/SR5614 - Swivel Plate

Part Number	Type	Dimensions (mm)								Approx. Load Capacity (kg)	Std Pack Qty
		D	C	A x B	E X G	F	H	R			
491060	1	50	18	60 x 60	45 x 45	6.5	70	-	40	52	
491061	1	63	22	60 x 60	45 x 45	6.5	90	-	60	40	
491062	1	75	24	60 x 60	45 x 45	6.5	106	-	60	32	
491063	1	80	22	60 x 60	45 x 45	6.5	109	-	60	32	
491064	1	100	27	76 x 70	60 x 50	8.3	134	-	80	16	
491065	1	125	27	76 x 70	60 x 50	8.3	159	-	80	14	
491066	2	50	18	60 x 60	45 x 45	6.5	70	80	40	52	
491067	2	63	22	60 x 60	45 x 45	6.5	90	84	60	40	
491068	2	75	24	60 x 60	45 x 45	6.5	106	84	60	32	
491069	2	80	22	60 x 60	45 x 45	6.5	109	84	60	32	
491070	2	100	27	76 x 70	60 x 50	8.3	134	106	80	16	
491071	2	125	27	76 x 70	60 x 50	8.3	159	106	80	14	

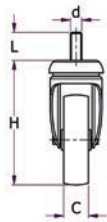
SR5610/SR5611 - Bolt Hole

Part Number	Type	Dimensions (mm)								Approx. Load Capacity (kg)	Std Pack Qty
		D	C	A	B	F	H	R			
491043	3	50	18	48	26	12	70	-	40	52	
491044	3	63	22	48	26	12	90	-	60	40	
491045	3	75	24	48	25	12	106	-	60	32	
491046	3	80	22	48	25	12	109	-	60	32	
491047	3	100	27	57	36	12	134	-	80	16	
491048	3	125	27	57	35	12	159	-	80	16	
491049	4	50	18	48	26	12	70	80	40	52	
491050	4	63	22	48	28	12	90	84	60	40	
491051	4	75	24	48	25	12	106	51	60	32	
491052	4	80	22	48	25	12	109	84	60	32	
491053	4	100	27	57	35	12	134	106	80	16	
491054	4	125	27	57	33	12	159	106	80	16	

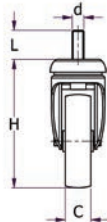
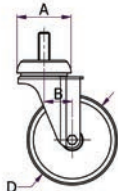
CONTINUED ON NEXT PAGE

INDUSTRIAL CASTORS - RUBBER TYRES

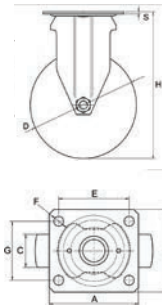
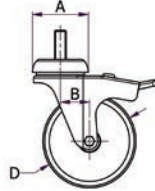
Castor - Black Synthetic Rubber Tyre *CONTINUED*



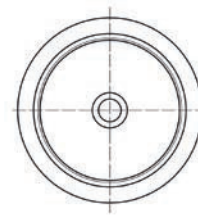
Type 5



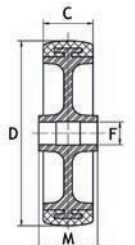
Type 6



Type 7



Type 8



SR5781/SR5782 - Threaded Stem

Part Number	Type	Thread Size	Dimensions (mm)				Approx. Load Capacity (kg)	Std Pack Qty
			D	C	H	B		
497955	5	M10 x 25	50	24	70.0	26	40	52
497956	5	M10 x 25	63	28	91.5	26	60	40
497957	5	M10 x 25	75	28	106.0	25	60	32
497958	5	M10 x 25	80	28	109.0	25	60	32
497959	5	M12 x 30	100	33	132.0	36	80	16
497960	5	M12 x 30	125	33	157.0	35	80	16
497961	6	M10 x 25	50	24	70.0	26	40	52
497962	6	M10 x 25	63	28	91.5	28	60	40
497963	6	M10 x 25	75	28	106.0	25	60	32
497964	6	M10 x 25	80	28	109.0	25	60	32
497965	6	M12 x 30	100	33	132.0	35	80	16
497966	6	M12 x 30	125	33	157.0	33	80	16

SR5612 - Fixed Plate

Part Number	Type	Dimensions (mm)						Approx. Load Capacity (kg)	Std Pack Qty
		D	C	A x B	E x G	F	H		
491055	7	50	18	60 x 60	45 x 45	6.5	70	40	52
491056	7	63	22	60 x 60	45 x 45	6.5	90	60	40
491057	7	75	24	60 x 60	45 x 45	6.5	106	60	32
491058	7	80	22	60 x 60	45 x 45	6.5	109	60	32
491059	7	100	27	76 x 70	60 x 50	8.3	134	80	16

SR5629 - Wheel Only

Part Number	Type	Dimensions (mm)				Approx. Load Capacity (kg)	Std Pack Qty
		D	C	F	M		
491149	8	50	19	8	22	40	68
491150	8	63	22	10	27	60	48
491151	8	75	24	10	27	60	48
491152	8	80	22	10	27	60	48
491153	8	100	27	12	32	80	48

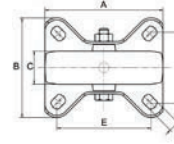
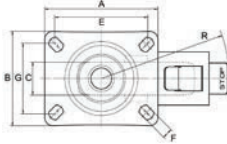
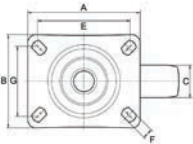
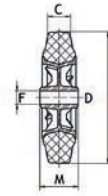
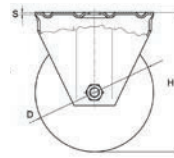
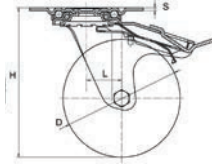
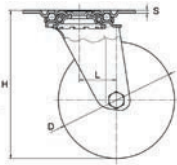
Compatible with SR5600 - SR5614 castors

INDUSTRIAL CASTORS - RUBBER TYRES

Castor - Black Natural Rubber Tyre

Zinc Plated Steel Housing, Plastic Wheel Centre

- Suitable for heavier duty applications such as trolleys, cabinets, waste equipment & workstations
- Black rubber tyre not resistant to grease, oils, chlorides & solvents
- Total stop brake locks wheel and swivel on braked versions
- Choice of fittings



Type 1

Type 2

Type 3

Type 4

SR5616/SR5617 - Swivel Plate

Part Number	Type	Dimensions (mm)							Approx. Load Capacity (kg)	Std Pack Qty
		D	C	A x B	E X G	F	H	R		
491080	1	80	25.0	97 x 80	80 x 60	9	108	-	50	16
491081	1	100	30.0	97 x 80	80 x 60	9	127	-	70	14
491082	1	125	38.0	97 x 80	80 x 60	9	155	-	100	12
499815	1	150	40.0	98.7 x 80	80 x 60	9	184	-	130	6
491083	1	150	40.0	133 x 106	105 x 80	11	192	-	140	6
491085	1	180	45.0	129 x 106	105 x 80	11	230	-	170	4
491086	1	200	50.0	129 x 106	105 x 80	11	240	-	205	2
491087	2	80	25.0	97 x 80	80 x 60	9	108	110	50	16
491088	2	100	30.0	97 x 80	80 x 60	9	127	110	70	14
491089	2	125	37.5	97 x 80	80 x 60	9	155	113	100	12
491091	2	150	40.0	98.7 x 80	80 x 60	9	184	115	130	6
491090	2	150	40.0	133 x 106	105 x 80	11	185	150	140	6
491092	2	180	45.0	129 x 106	105 x 80	11	230	150	170	4
491093	2	200	50.0	129 x 106	105 x 80	11	240	150	205	2

SR5615 - Fixed Plate

Part Number	Type	Dimensions (mm)							Approx. Load Capacity (kg)	Std Pack Qty
		D	C	A x B	E X G	F	H	R		
491072	3	80	25.0	100 x 84	80 x 60	9	108	-	50	16
491073	3	100	30.0	100 x 84	80 x 60	9	127	-	70	14
491074	3	125	37.5	100 x 84	80 x 60	9	155	-	100	12
491075	3	150	40.0	116 x 84	80 x 60	9	183	-	130	6
499817	3	150	40.0	100 x 84	80 x 60	9	184	-	140	6
491078	3	180	45.0	135 x 110	105 x 80	11	230	-	170	4
491079	3	200	50.0	135 x 110	105 x 80	11	240	-	205	2

SR5629 - Wheel Only

Part Number	Type	Dimensions (mm)				Approx. Load Capacity (kg)	Std Pack Qty
		D	C	F	M		
491146	4	80	25.0	12	39	50	48
491147	4	100	30.0	12	39	70	36
491148	4	125	37.5	15	44	100	20

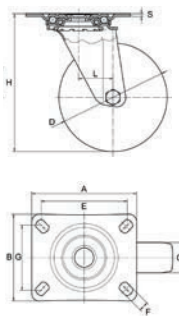
Compatible with SR5615 - SR5620 castors

INDUSTRIAL CASTORS - RUBBER TYRES

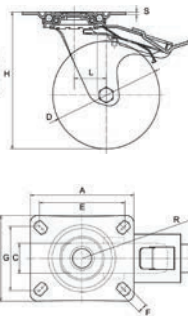
Castor - Black Natural Rubber Tyre

Zinc Plated Steel Housing and Wheel Centre

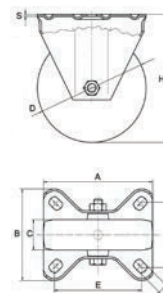
- Suitable for heavier duty applications such as trolleys, cabinets, waste equipment & workstations
- Black rubber tyre not resistant to grease, oils, chlorides & solvents
- Total stop brake locks wheel and swivel on braked versions
- Roller bearing for smooth motion
- Choice of fittings



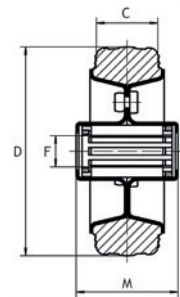
Type 1



Type 2



Type 3



Type 4

SR5619/SR520 - Swivel Plate

Part Number	Type	Dimensions (mm)							Approx. Load Capacity (kg)	Std Pack Qty
		D	C	A x B	E x G	F	H	R		
491101	1	80	25.0	97 x 80	80 x 60	9	108	-	50	16
491102	1	100	30.0	97 x 80	80 x 60	9	127	-	70	14
491103	1	125	37.5	97 x 80	80 x 60	9	155	-	110	12
499812	1	150	40.0	98.7 x 80	80 x 60	9	184	-	140	6
491104	1	150	40.0	133 x 106	105 x 80	11	184	-	150	6
491106	1	180	45.0	129 x 106	105 x 80	11	230	-	180	4
491107	1	200	50.0	129 x 106	105 x 80	11	240	-	220	2
491108	2	80	25.0	97 x 80	80 x 60	9	108	110	50	16
491109	2	100	30.0	97 x 80	80 x 60	9	127	110	70	14
491110	2	125	37.5	97 x 80	80 x 60	9	155	113	110	12
499813	2	150	40.0	98.7 x 80	80 x 60	9	184	115	140	6
491111	2	150	40.0	133 x 106	105 x 80	11	184	150	150	6
491113	2	180	45.0	129 x 106	105 x 80	11	230	150	150	4
491114	2	200	50.0	129 x 106	105 x 80	11	240	150	220	2

SR5618 - Fixed Plate

Part Number	Type	Dimensions (mm)						Approx. Load Capacity (kg)	Std Pack Qty
		D	C	A x B	E x G	F	H		
491094	3	80	25.0	100 x 84	80 x 60	9.0	108	50	16
491095	3	100	30.0	100 x 84	80 x 60	9.0	127	70	14
491096	3	125	37.5	116 x 84	80 x 60	9.0	160	110	12
499814	3	150	40.0	100 x 84	80 x 60	9.0	184	150	6
491097	3	150	40.0	135 x 110	105 x 80	11.0	184	150	6
491099	3	180	45.0	135 x 110	105 x 80	11.0	218	180	4
491100	3	200	50.0	135 x 110	105 x 80	11.0	240	220	2

SR5629 - Wheel Only

Part Number	Type	Dimensions (mm)				Approx. Load Capacity (kg)	Std Pack Qty
		D	C	F	M		
491135	4	80	25.0	12	39	50	48
491136	4	100	30.0	12	39	70	36
491137	4	125	37.5	15	44	110	20

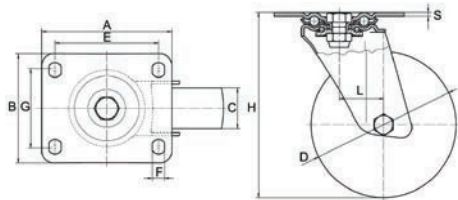
Compatible with SR5615 - SR5620 castors

INDUSTRIAL CASTORS - PU TYRES

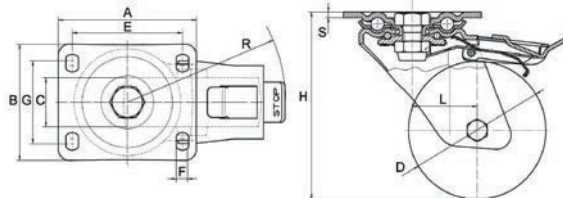
Castor - Red Polyurethane Tyre

Zinc Plated Steel Housing, Cast Iron Wheel Centre

- Ideal for heavy-duty applications such as trolleys, lifting equipment & automatic gates
- Good resistance to wear, greases and petroleum byproducts
- Double ball race crown
- Ball bearings for smooth motion
- Total stop brake locks wheel and swivel



Type 1



Type 2

SR5625/SR5626 - Swivel Plate

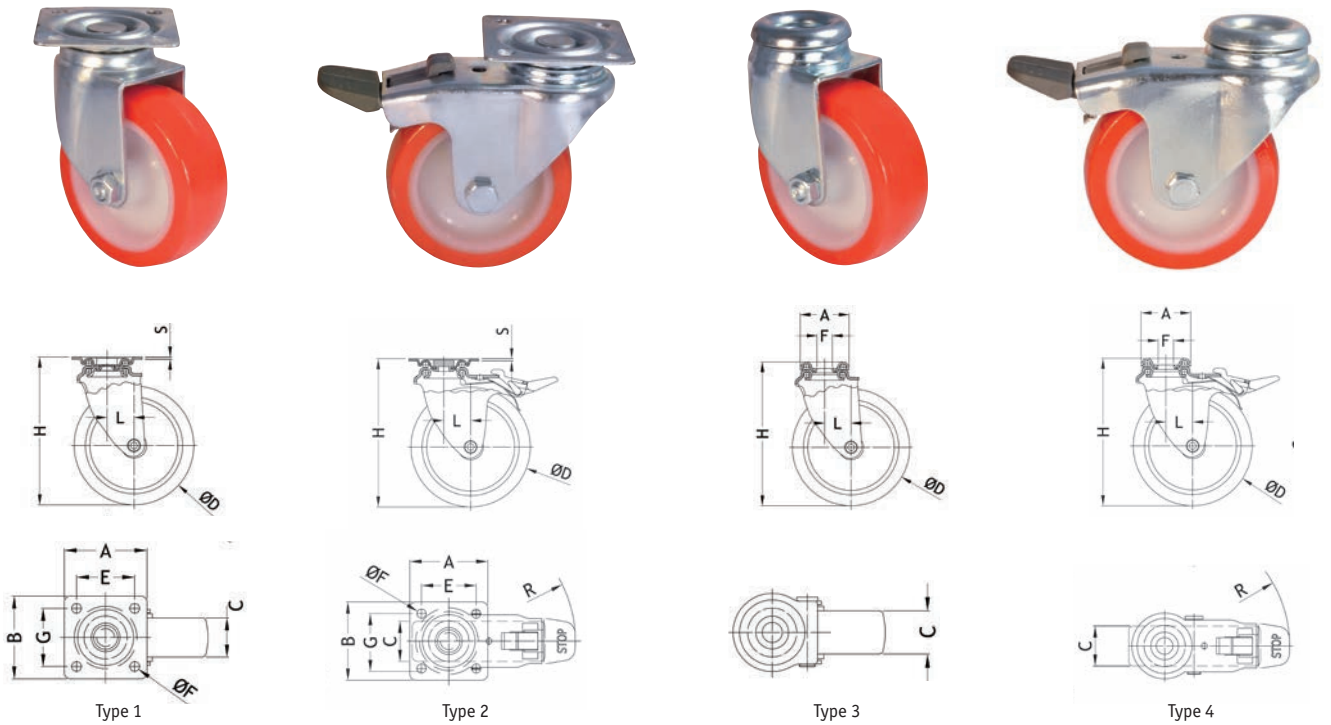
Part Number	Type	Dimensions (mm)						Approx. Load Capacity (kg)	Std Pack Qty
		D	C	A x B	E x G	F	H		
494784	1	80	25	100 x 84	80 x 60	9	125	160	7
494785	1	100	30	100 x 84	80 x 60	9	135	225	6
494786	1	125	30	100 x 84	80 x 60	9	161	300	5
116508651	1	150	40	132 x 110	105 x 80	12	188	400	2
491126	1	175	40	132 x 110	105 x 80	12	230	650	2
491127	1	200	50	132 x 110	105 x 80	12	243	700	2
494787	2	80	25	100 x 84	80 x 60	9	125	160	6
494788	2	100	30	100 x 84	80 x 60	9	135	225	5
494789	2	125	30	100 x 84	80 x 60	9	161	300	4
116508652	2	150	40	132 x 110	105 x 80	12	188	400	2
491129	2	175	40	132 x 110	105 x 80	12	230	650	2
491130	2	200	50	132 x 110	105 x 80	12	243	700	2

INDUSTRIAL CASTORS - PU TYRES

Castor - Red Polyurethane Tyre

Zinc Plated Steel Housing, Plastic Wheel Centre

- Suitable for light weight medical equipment, display cabinets and point-of-sale applications
- Good resistance to wear, greases and petroleum by-products
- Choice of fittings



SR5654/SR5655 - Swivel Plate

Part Number	Type	Dimensions (mm)							Approx. Load Capacity (kg)	Std Pack Qty
		D	C	A x B	E X G	F	H	L		
494749	1	40	18.5	47x47	33x33	5.5	62.5	18.5	25	90
494750	1	50	18.5	47x47	33x33	5.5	67.5	18.5	35	80
494751	1	63	21.5	47x47	33x33	5.5	80.5	18.5	40	60
494752	2	50	18.5	47x47	33x33	5.5	67.5	27.0	35	68
494753	2	63	21.5	47x47	33x33	5.5	80.5	24.5	40	52

SR5656/SR5657 - Bolt Hole

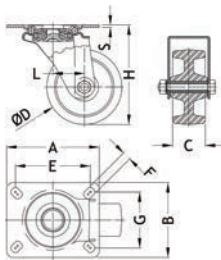
Part Number	Type	Dimensions (mm)							Approx. Load Capacity (kg)	Std Pack Qty
		D	C	A	F	H	L			
494754	3	40	17.5	33.5	10	62.5	18.5	25	110	
494755	3	50	17.0	33.5	10	67.5	18.5	35	100	
494756	3	63	21.5	33.5	10	80.5	18.5	40	75	
494757	4	50	18.5	33.5	10	67.5	27.0	35	80	
494758	4	63	21.5	33.5	10	80.5	24.5	40	60	

INDUSTRIAL CASTORS - PHENOLIC WHEELS

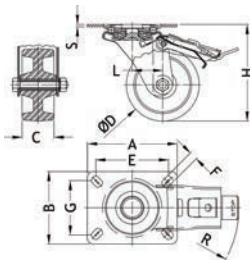
Castor - Phenolic Wheel

Stainless Steel Housing

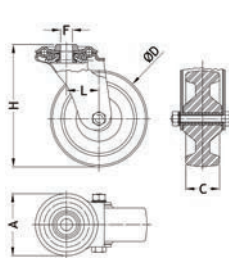
- Stainless steel housing resistant to corrosion and rust
- Suitable for high temperature operating environments (up to 260°C)
- Ideal for powder coating, bakery ovens and other applications where resistance to temperatures is required
- Good resistance to water and chemicals



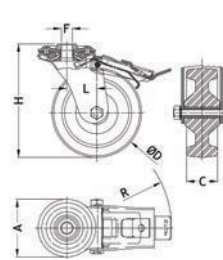
Type 1



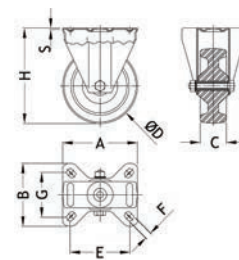
Type 2



Type 3



Type 4



Type 5

SR5641/SR5642 - Swivel Plate

Part Number	Type	Dimensions (mm)							Approx. Load Capacity (kg)	Std Pack Qty
		D	C	A x B	E X G	F	H	R		
494711	1	80	35	95 x 80	80 x 60	9	108	-	100	16
494712	1	100	35	95 x 80	80 x 60	9	127	-	150	12
494713	2	80	35	95 x 80	80 x 60	9	108	110	100	16
494714	2	100	35	95 x 80	80 x 60	9	127	110	150	14

SR5643/SR5644 - Bolt Hole

Part Number	Type	Dimensions (mm)						Approx. Load Capacity (kg)	Std Pack Qty
		D	C	A	F	H	R		
494715	3	80	35	64	12	108	-	100	16
494716	3	100	35	64	12	127	-	120	12
494717	4	80	35	64	12	108	110	100	16
494718	4	100	35	64	12	127	110	120	12

SR5645 - Fixed Plate

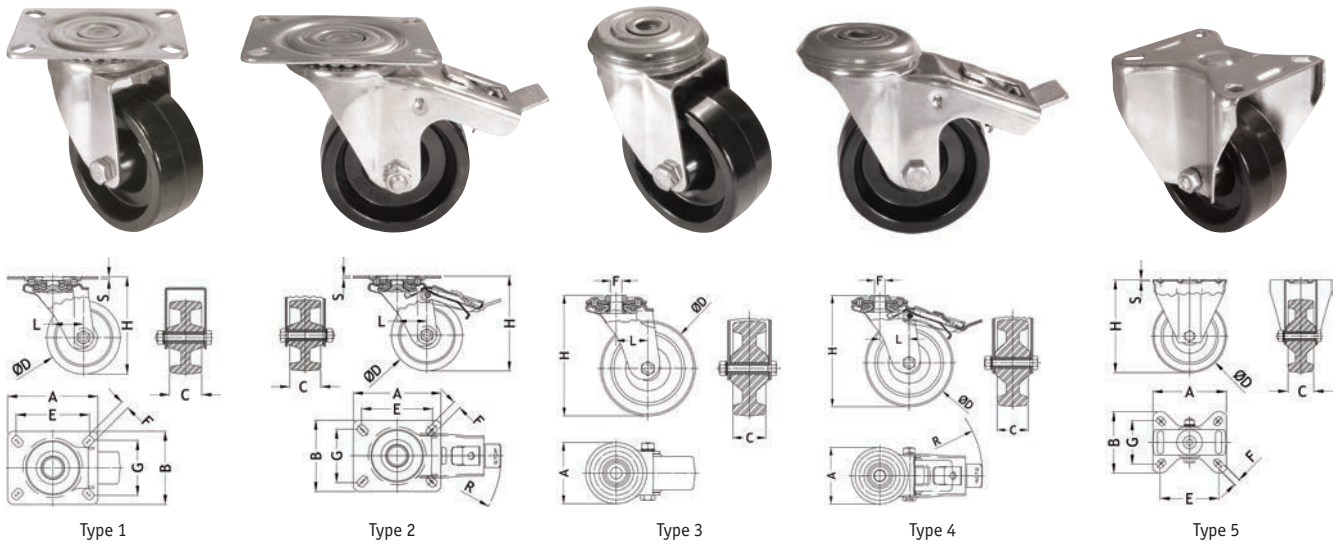
Part Number	Type	Dimensions (mm)					Approx. Load Capacity (kg)	Std Pack Qty	
		D	C	A x B	E X G	F			H
494719	5	80	35	100 x 85	80 x 60	9	108	100	16
494720	5	100	35	100 x 85	80 x 60	9	127	150	12

INDUSTRIAL CASTORS - PHENOLIC WHEELS

Castor - Phenolic Wheel

Zinc Plated Steel Housing

- Suitable for high temperature operating environments (up to 260°C)
- Ideal for powder coating, bakery ovens and other applications where resistance to temperatures is required
- Good resistance to water and chemicals



SR5636/SR5637 - Swivel Plate

Part Number	Type	Dimensions (mm)							Approx. Load Capacity (kg)	Std Pack Qty
		D	C	A x B	E X G	F	H	R		
494701	1	80	35	100 x 80	80 x 60	9	108	-	100	18
494702	1	100	35	100 x 80	80 x 60	9	127	-	150	14
494703	2	80	35	100 x 80	80 x 60	9	108	116	100	14
494704	2	100	35	100 x 80	80 x 60	9	127	116	150	12

SR5638/SR5639 - Bolt Hole

Part Number	Type	Dimensions (mm)							Approx. Load Capacity (kg)	Std Pack Qty
		D	C	A	F	H	R			
494705	3	80	35	65	12	108	-	100	20	
494706	3	100	35	65	12	127	-	120	16	
494707	4	80	35	65	12	108	116	100	16	
494708	4	100	35	65	12	127	116	120	12	

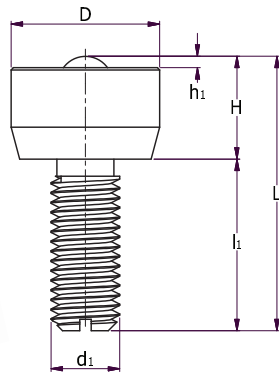
SR5640 - Fixed Plate

Part Number	Type	Dimensions (mm)						Approx. Load Capacity (kg)	Std Pack Qty
		D	C	A x B	E X G	F	H		
494709	5	80	35	100 x 85	80 x 60	9	108	100	16
494710	5	100	35	100 x 85	80 x 60	9	127	150	12

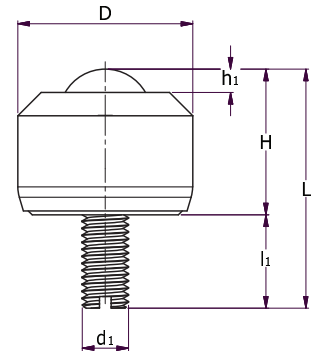
BALL TRANSFERS

Mini Ball Transfer

- Can be supplied as flat top or angled top
- Stainless steel screw thread fixing
- Suitable for applications such as, measuring equipment, guides for small linear motion (eg photo copier slides), transfer material in clean rooms, miniature mechanisms
- Large load-bearing ball, which sits upon many small balls encapsulated in a hemispherical cup



Flat top



Angled top

Flat Top

Carbon steel load balls & outer cover, stainless steel small balls

Part Number	Ball Size	Dimensions (mm)						Dynamic Load Up (kg)	Std Pack Qty
		D	H	h1	L	l1	d1		
550989	4.8	13.0	9.0	1.0	24.0	15.0	M6	10	20
550992	6.4	17.0	11.0	2.0	26.0	15.0	M6	20	20
550995*	7.9	18.0	14.0	2.0	32.0	18.0	M8	30	20

* Chrome steel small balls

Stainless steel load balls, stainless steel outer cover, stainless steel small balls

Part Number	Ball Size	Dimensions (mm)						Dynamic Load Up (kg)	Std Pack Qty
		D	H	h1	L	l1	d1		
550990	4.8	13.0	9.0	1.0	24.0	15.0	M6	10	20
550993	6.4	17.0	11.0	2.0	26.0	15.0	M6	20	20
550996	7.9	18.0	14.0	2.0	32.0	18.0	M8	30	20

Angled Top

Stainless steel load balls, aluminium outer cover, stainless steel small balls

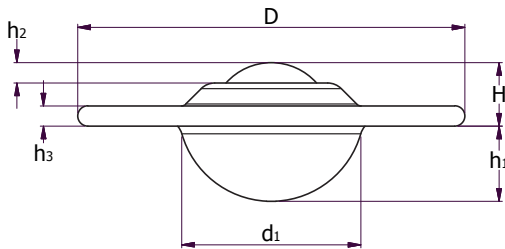
Part Number	Ball Size	Dimensions (mm)						Dynamic Load Up (kg)	Std Pack Qty
		D	H	h1	L	l1	d1		
550991	4.8	8.0	6.0	1.0	8.5	2.5	M2	5	20
550994	6.4	13.0	10.5	2.0	16.5	6.0	M3	10	20
550997	7.9	15.0	12.5	2.0	20.5	8.0	M4	15	20

BALL TRANSFERS

Ball Transfer - Flange Fixing



- Low profile ball transfers
- With a flange fixing
- Dirt exit hole
- Lubricated, so no need for further attention
- Available in carbon steel, nylon and stainless steel load bearings
- Large load-bearing ball, which sits upon many small balls encapsulated in a hemispherical cup



Carbon steel bearings, zinc plated pressings

Part Number	Fixing Holes	Dimensions (mm)								Load Up (kg)	Load Down (kg)	Std Pack Qty
		Ball Size	D	H	h2	d1	h1	h3	Fixing Hole Dia			
550966	2	12.7	31.0	7.0	2.5	20.0	8.2	2.6	2.8	8	4	50
550968	2	15.8	41.3	10.2	4.0	23.0	8.3	3.2	3.5	12	6	50
550974	2	25.4	73.0	14.2	6.3	38.1	15.8	3.5	5.1	55	25	25
550970	3	19.0	61.0	10.0	3.2	30.0	12.0	3.2	5.1	25	10	25
550972	3	25.4	73.0	14.2	6.3	38.1	15.8	3.5	5.1	55	25	25
551030	3	31.7	73.7	16.2	8.0	46.5	19.9	4.2	5.1	125	55	45
551031	3	39.7	89.0	21.4	8.7	56.5	24.6	6.0	7.0	140	60	10
551033	3	50.8	120.7	28.3	14.3	76.5	30.2	6.3	8.0	340	100	5

Nylon steel bearings, zinc plated pressings

Part Number	Fixing Holes	Dimensions (mm)								Load Up (kg)	Load Down (kg)	Std Pack Qty
		Ball Size	D	H	h2	d1	h1	h3	Fixing Hole Dia			
551050	2	12.7	31.0	7.0	2.5	20.0	8.2	2.6	2.8	4	2	50
551051	2	15.8	41.3	10.2	4.0	23.0	8.3	3.2	3.5	8	4	50
551054	2	25.4	73.0	14.2	6.3	38.1	15.8	3.5	5.1	25	10	25
551052	3	19.0	61.0	10.0	3.2	30.0	12.0	3.2	5.1	20	10	25
551053	3	25.4	73.0	14.2	6.3	38.1	15.8	3.5	5.1	25	10	25

Stainless steel bearings & pressings

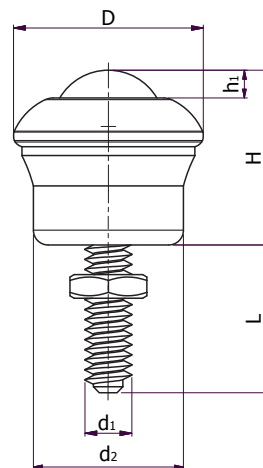
Part Number	Fixing Holes	Dimensions (mm)								Load Up (kg)	Load Down (kg)	Std Pack Qty
		Ball Size	D	H	h2	d1	h1	h3	Fixing Hole Dia			
550967	2	12.7	31.0	7.0	2.5	20.0	8.2	2.6	2.8	8	4	50
550969	2	15.8	41.3	10.2	4.0	23.0	8.3	3.2	3.5	12	6	50
116508999	2	25.4	73.0	14.2	6.3	38.1	15.8	3.5	5.1	55	25	25
550971	3	19.0	61.0	10.0	3.2	30.0	12.0	3.2	5.1	25	10	25
550973	3	25.4	73.0	14.2	6.3	38.1	15.8	3.5	5.1	55	25	25
551032	3	31.7	73.7	16.2	8.0	46.5	19.9	4.2	5.1	125	55	40

BALL TRANSFERS

Ball Transfer - Thread with Nut Fixing



- Dirt exit hole
- Large support area, greater stability, drilled hole fixing
- Typical applications; Cargo and baggage handling, assembly lines, machine loading, sliding door systems, machine tables
- Large load-bearing ball, which sits upon many small balls encapsulated in a hemispherical cup



Carbon steel bearings, zinc plated pressings

Part Number	Ball Size (mm)	Max. Torque on Nut (Nm)	Dimensions (mm)						Load Up (kg)	Load Down (kg)	Std Pack Qty
			D	H	L	h1	d1	d2			
550976	19	15	32.1	30.2	25.0	4.7	M8	25.4	25	10	25
550977	19	15	32.1	30.2	30.0	4.7	M8	25.4	25	10	25
550978	19	15	32.1	30.2	35.0	4.7	M8	25.4	25	10	25
550979	19	15	32.1	30.2	45.0	4.7	M8	25.4	25	10	25
550980	25.4	15	39.7	39.7	18.0	6.3	M8	25.4	55	25	25
550981	25.4	15	39.7	39.7	23.0	6.3	M8	25.4	55	25	25
550982	25.4	15	39.7	39.7	28.0	6.3	M8	25.4	55	25	25
550983	25.4	15	39.7	39.7	33.0	6.3	M8	25.4	55	25	25
550984	25.4	15	39.7	39.7	43.0	6.3	M8	25.4	55	25	25
551023	39.7	20	55.5	54.8	42.0	11.9	M10	49.0	140	60	15

Stainless steel bearings, stainless steel pressings

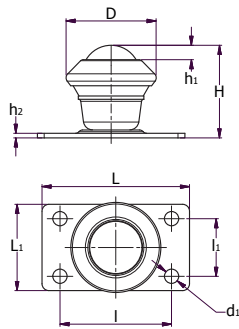
Part Number	Ball Size (mm)	Max. Torque on Nut (Nm)	Dimensions (mm)						Load Up (kg)	Load Down (kg)	Std Pack Qty
			D	H	L	h1	d1	d2			
551025	19	15	32.1	30.2	30.0	4.7	M8	25.4	25	10	25
551022	25.4	15	39.7	39.7	33.0	6.3	M8	25.4	55	25	25
551024	39.7	20	55.5	54.8	42.0	11.9	M10	49.0	140	60	10

BALL TRANSFERS

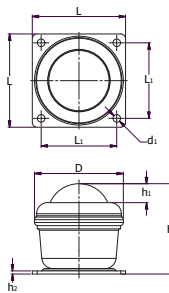
Ball Transfer Base Fixing



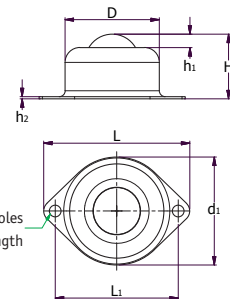
- Drill hole fixing
- Dirt exit hole
- Large support area, greater stability, drilled hole fixing
- Typical applications; Cargo and baggage handling, assembly lines, machine loading, sliding door systems, machine tables
- Large load-bearing ball, which sits upon many small balls encapsulated in a hemispherical cup
- Type 1 & 2 - Heavy duty fixing
- Type 3 - High load capacity



Type 1



Type 2



Type 3

Carbon steel bearings, zinc plated pressings

Part Number	Type	Ball Size (mm)	Fixing Holes	Dimensions (mm)										Load Up (kg)	Load Down (kg)	Std Pack Qty
				D	H	h1	h2	d1	L	L1	l	l1				
550985	1	25.4	4	39.7	41.3	6.3	2.0	6.3	65.0	38.0	49.2	25.4	55	25	25	
550987	3	25.4	2	44.5	31.5	6.3	1.0	51.0	69.0	58.1	-	-	55	25	25	
551044	2	39.7	4	55.5	57.0	11.9	2.0	4.8	58.7	47.6	-	-	140	60	10	
551045	1	19	4	32.1	32.5	4.7	2.0	6.3	65.0	38.0	49.2	25.4	25	10	10	

Nylon load bearing, zinc plated pressings

Part Number	Type	Ball Size (mm)	Fixing Holes	Dimensions (mm)										Load Up (kg)	Load Down (kg)	Std Pack Qty
				D	H	h1	h2	d1	L	L1	l	l1				
551055	1	25.4	4	39.7	41.3	6.3	2.0	6.3	65.0	38.0	49.2	25.4	25	10	25	
551056	3	25.4	2	44.5	31.5	6.3	1.0	51.0	69.0	58.1	-	-	25	10	20	

Stainless steel bearings and pressings

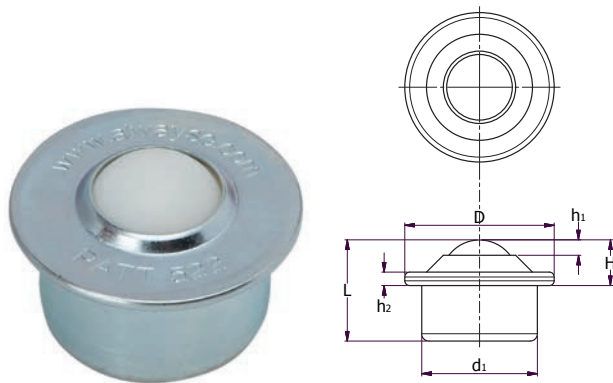
Part Number	Type	Ball Size (mm)	Fixing Holes	Dimensions (mm)										Load Up (kg)	Load Down (kg)	Std Pack Qty
				D	H	h1	h2	d1	L	L1	l	l1				
550986	1	25.4	4	39.7	41.3	6.3	2.0	6.3	65.0	38.0	49.2	25.4	55	25	10	
550988	3	25.4	2	44.5	31.5	6.3	1.0	51.0	69.0	58.1	-	-	55	25	10	
551043	2	39.7	4	55.5	57.0	11.9	2.0	4.8	58.7	47.6	-	-	140	60	10	

BALL TRANSFERS

Euro Ball Transfer



- Temperature range: -30°C to 70°C continuous, +100 °C intermittent
- Special seals may need to be fitted to suit extreme conditions
- Typical applications; Cargo and baggage handling, assembly lines, machine loading, sliding door systems, machine tables
- Euro transfer units have special toughened steel bearing cup, with a dirt exit hole and woollen felt seal
- Large load-bearing ball, which sits upon many small balls encapsulated in a hemispherical cup



Type 1



Type 2

Carbon steel bearings, zinc plated pressings

Part Number	Ball Size (mm)	Type	Dimensions (mm)								Dynamic Loading (kg)	Std Pack Qty
			D	H	h1	d1	h2	L	T	Panel Thickness		
550998	15.8	1	31.0	9.5	3.2	24.0	2.8	21.0	-	-	60	20
551007	15.8	2	31.0	9.5	3.2	24.0	11.5	21.0	25.0	2.0	60	50
551000	22.2	1	45.0	9.8	4.3	36.0	2.8	30.0	-	-	160	25
551009	22.2	2	45.0	9.8	4.3	36.0	20.2	30.0	37.0	3.0	160	25
551002	30.0	1	55.0	13.8	5.5	45.0	4.0	37.0	-	-	300	20
551011	30.0	2	55.0	13.8	5.5	45.0	23.2	37.0	46.0	6.0	300	20
551029	44.5	1	75.0	19.0	9.0	62.0	4.0	53.5	-	-	610	10

Nylon load bearings, zinc plated pressings

Part Number	Ball Size (mm)	Type	Dimensions (mm)								Dynamic Loading (kg)	Std Pack Qty
			D	H	h1	d1	h2	L	T	Panel Thickness		
551057	15.8	1	31.0	9.5	3.2	24.0	2.8	21.0	-	-	10	50
551059	15.8	2	31.0	9.5	3.2	24.0	11.5	21.0	25.0	2.0	10	50
551058	22.2	1	45.0	9.8	4.3	36.0	20.2	30.0	-	-	20	25
551060	22.2	2	45.0	9.8	4.3	36.0	20.2	30.0	37.0	3.0	20	25

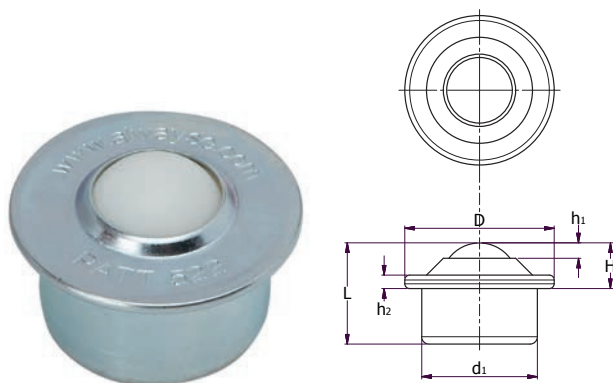
CONTINUED ON NEXT PAGE

BALL TRANSFERS

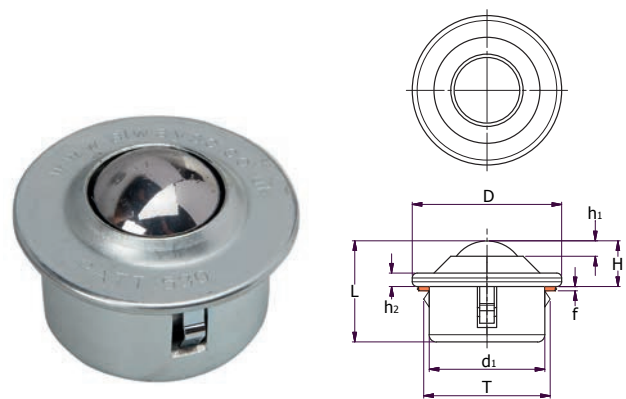
Euro Ball Transfer



- Temperature range: -30°C to 70°C continuous, +100 °C intermittent
- Special seals may need to be fitted to suit extreme conditions
- Typical applications; Cargo and baggage handling, assembly lines, machine loading, sliding door systems, machine tables
- Euro transfer units have special toughened steel bearing cup, with a dirt exit hole and woollen felt seal
- Large load-bearing ball, which sits upon many small balls encapsulated in a hemispherical cup



Type 1



Type 2

Carbon steel bearings, zinc plated pressings

Part Number	Ball Size (mm)	Type	Dimensions (mm)								Dynamic Loading (kg)	Std Pack Qty
			D	H	h1	d1	h2	L	T	Panel Thickness		
550998	15.8	1	31.0	9.5	3.2	24.0	2.8	21.0	-	-	60	20
551007	15.8	2	31.0	9.5	3.2	24.0	11.5	21.0	25.0	2.0	60	50
551000	22.2	1	45.0	9.8	4.3	36.0	2.8	30.0	-	-	160	25
551009	22.2	2	45.0	9.8	4.3	36.0	20.2	30.0	37.0	3.0	160	25
551002	30.0	1	55.0	13.8	5.5	45.0	4.0	37.0	-	-	300	20
551011	30.0	2	55.0	13.8	5.5	45.0	23.2	37.0	46.0	6.0	300	20
551029	44.5	1	75.0	19.0	9.0	62.0	4.0	53.5	-	-	610	10

Nylon load bearings, zinc plated pressings

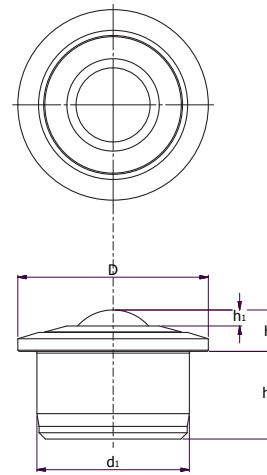
Part Number	Ball Size (mm)	Type	Dimensions (mm)								Dynamic Loading (kg)	Std Pack Qty
			D	H	h1	d1	h2	L	T	Panel Thickness		
551057	15.8	1	31.0	9.5	3.2	24.0	2.8	21.0	-	-	10	50
551059	15.8	2	31.0	9.5	3.2	24.0	11.5	21.0	25.0	2.0	10	50
551058	22.2	1	45.0	9.8	4.3	36.0	20.2	30.0	-	-	20	25
551060	22.2	2	45.0	9.8	4.3	36.0	20.2	30.0	37.0	3.0	20	25

CONTINUED ON NEXT PAGE

BALL TRANSFERS

Heavy Duty Ball Transfer

- High load capacity
- Low profile, robust construction
- Solid body, steel ball units
- Incorporate a seal and dirt exit hole for maximum efficiency and smooth running



Carbon steel bearings, zinc plated pressings

Part Number	Ball Size (mm)	Dimensions (mm)					Dynamic Load (kg)	Std Pack Qty
		D	H	h1	d1	h2		
551015*	15.8	31.0	9.5	4.0	24.0	11.5	10	50
551013	22.2	45.0	9.8	3.8	36.0	20.7	180	25
551014	30.0	55.0	13.8	5.5	45.0	23.0	350	25

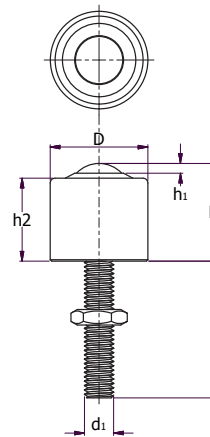
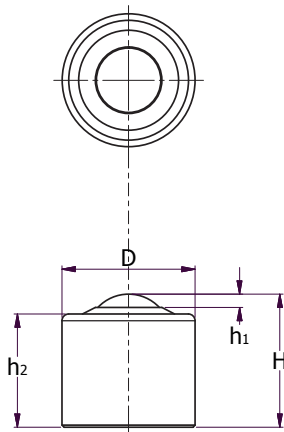
* All plastic unit



BALL TRANSFERS

Heavy Duty Ball Transfer - Long Life

- These heavy duty units are built to provide a long working life
- Suitable to withstand harsh conditions
- With dust seal and dirt exit hole
- Provide a higher load capacity than standard units
- Solid steel body for attachment purposes, but not shock loading
- Body chemical black finish



Carbon steel bearings, zinc plated pressings

Part Number	Ball Size (mm)	Type	Dimensions (mm)							Dynamic Load (kg)	Std Pack Qty
			D	H	h1	h2	d1	L			
551016	12.7	1	20.0	20.0	2.0	17.0	-	-	25	50	
551017	12.7	2	20.0	20.0	2.0	17.0	M6	28.0	25	50	
551018	19.0	1	30.0	30.0	4.0	26.0	-	-	50	25	
551019	19.0	2	30.0	30.0	4.0	26.0	M8	25.0	50	20	
551020	25.4	1	35.0	35.0	7.0	28.0	-	-	125	20	
551021	25.4	2	35.0	35.0	7.0	28.0	M8	40.0	125	40	
551037	31.7	2	50.0	45.0	8.0	37.0	M10	40.0	250	10	
551036	39.7	2	60.0	55.0	9.0	46.0	M12	50.0	500	10	

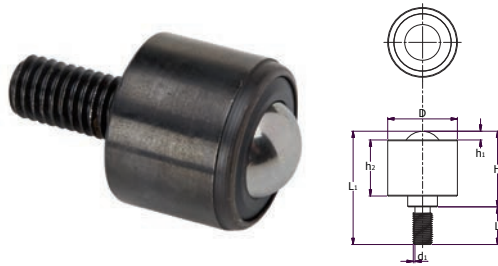
BALL TRANSFERS

Heavy Duty Ball Transfer - Hevi-Load

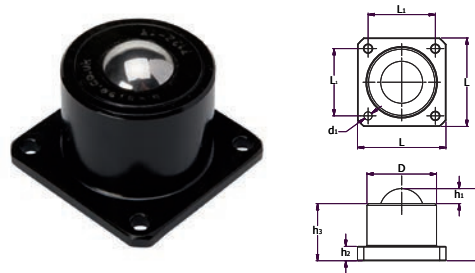


- Hevi-Load units are designed and manufactured to precise standards
- A range of ball sizes that offer load capacity from 35kg to 1000kg
- This range will work at maximum capacity in temperatures from -30°C to +100°C
- All Hevi-load units are anti-corrosive and have a black coated finish

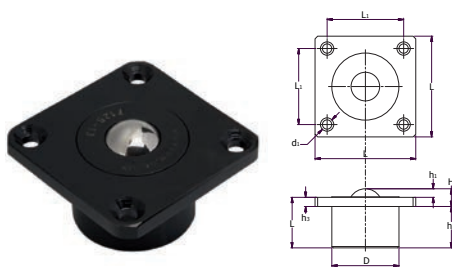
Type 1



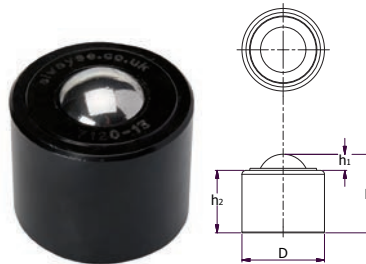
Type 2



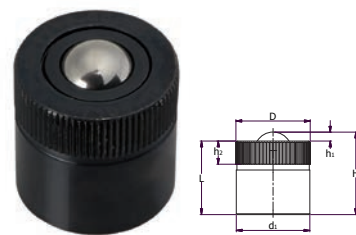
Type 3



Type 4



Type 5



Carbon steel balls

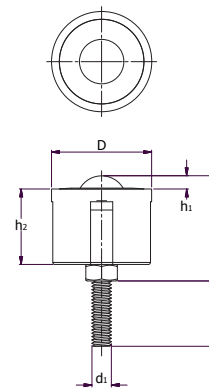
Part Number	Ball Size (mm)	Type	Dimensions (mm)								Dynamic Load (kg)	Std Pack Qty
			D	H	h1	h2	h3	d1	L	L1		
551026	12.7	1	20.6	19.6	3.5	16.1	-	M8	16.2	35.8	35	50
551027	25.4	1	44.5	48.3	5.6	35.8	-	M12	24.1	72.4	135	10
551028	38.1	1	60.0	73.5	13.0	48.5	-	M20	40.8	114.3	1000	10
551035	25.4	2	44.5	41.4	5.6	4.8	35.8	4 x 5.6	57.2	44.5	135	10
551034	38.1	2	60.0	62.2	13.0	12.4	49.2	4 x 7.1	76.2	57.9	1000	5
551042	25.4	3	50.8	13.0	6.1	32.0	6.9	4 x 7.1	76.2	57.9	320	5
551041	38.1	3	60.0	25.4	13.0	35.8	12.4	4 x 7.1	76.2	57.9	1000	5
551046	12.7	4	20.6	19.6	3.5	16.1	-	-	-	-	35	50
551047	25.4	4	44.5	41.4	5.6	35.8	-	-	-	-	135	10
551040	12.7	5	25.6	28.5	3.1	8.0	-	25.4	25.4	-	25	50

BALL TRANSFERS

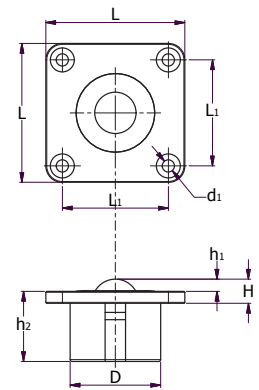
Heavy Duty Ball Transfer - Double Seal



- Double seal for excluding debris from the bearings
- High resistance to organic solvents, petrol and oil
- Temperature range -30°C to +100°C
- The main bearing track is hardened and has been load and life tested, the unit works equally well inverted or at an angle
- The top cover seal removes larger particles and the inner seal removes fine dust and particles off of the larger ball and expels it through side vents
- Type 1 has a top flange with 4 hole fixings with 6.7mm hole diameters
- Type 2 has a bolt hole fixing with a locknut for height adjustment. Maximum tightening torque is 15 Nm



Type 1



Type 2

Stainless steel bearings and pressings

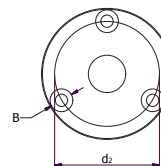
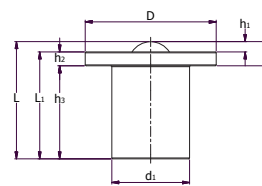
Part Number	Ball Size (mm)	Type	Dimensions (mm)								Dynamic Load (kg)	Std Pack Qty
			D	H	h1	h2	d1	L	L1			
551039	25.4	1	50.8	53.0	6.7	38.3	M10	17.6	-	240	5	
551038	25.4	2	50.8	13.0	6.7	38.3	6.7	76	58.0	240	5	

Heavy Duty Ball Transfer - Spring Loaded

SR6457



- Spring loaded units reduce damage caused by shock loads
- Low profile
- Large top flange
- They allow for dimension changes due to temperature and self-adjust to evenly distribute loads
- Suitable for applications such as; Guillotines, presses, moulding machines, tool bases, press brakes and shock loading applications



Carbon steel bearings and zinc plated pressings

Part Number	Ball Size (mm)	Dimensions (mm)										Dynamic Load (kg)	Load Full Depress (kg)	Std Pack Qty
		D	H	h1	h2	h3	d1	d2	B	L	L1			
551048	19	66.6	11.4	3.5	7.9	51.6	36.5	50.8	3 x 7	63.0	59.5	10	30	10
551049	25.4	75.0	13.8	5.9	7.9	53.3	44.5	60.3	3 x 7	67.1	61.2	35	100	5